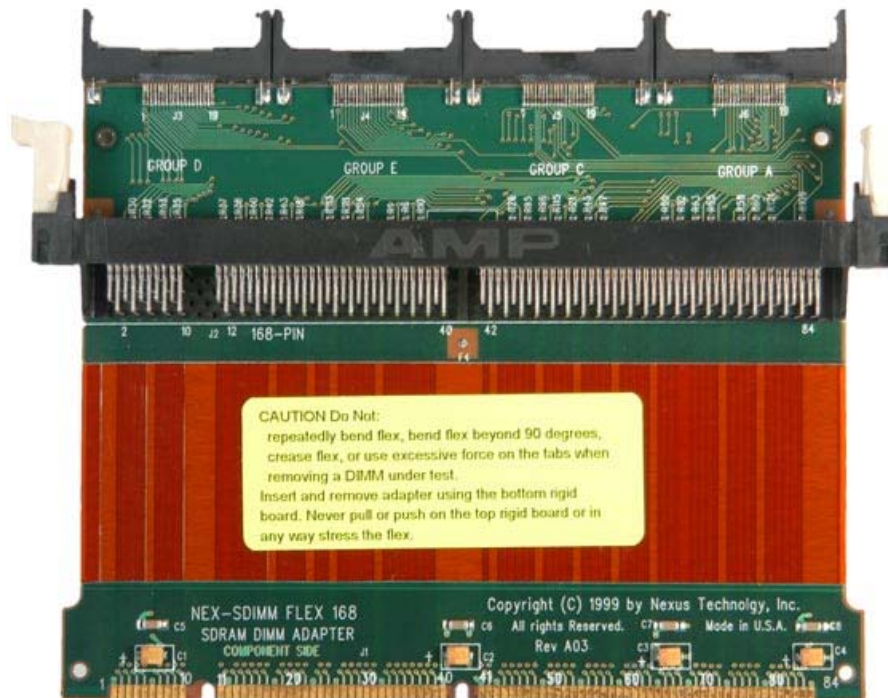


---

## NEX-SDIMMFLEX168

---



- Quick and easy connection between the 168-pin, 3.3V, unbuffered or registered, synchronous SDRAM DIMM bus and a Tektronix Logic Analyzer
- Rigid/Flex/Rigid design can be bent to fit in mechanically tight applications
- Verified for PC100 applications
- Extender design does not require a dedicated slot
- Symbolic disassembly of bus transactions
- No active buffering
- Accurate 2-8GHz timing analysis on every channel of the TLA
- Simultaneous state and timing on every channel of the TLA
- Correlate with data from other acquisition modules
- Use the TLA's Extended iView capabilities to view any channel on an oscilloscope without re-probing (not available in all configurations).
- Software only support is available for embedded memory designs

## General Description

The NEX-SDIMM168 is designed to connect to an industry standard, 168-pin, 3.3V, unbuffered or registered, DRAM DIMM connector (JEDEC standard No. 21-C). This support provides clocking, setup, symbolic display of data and a quick and easy connection to the DIMM bus. Connections are made through P6434 probes or P6860 probes using Mictor adapters. Schottky diode terminators are used on every signal to minimize unwanted reflections.

**2-8Ghz Timing Analysis** available for all DDR signals

**Oscilloscope Connectivity** on any channel without re-probing via the TLA's Enhanced iView Analog Mux capability (not available in all configurations).

**Pre-Defined Symbols** allow for easy Trigger Setup

**No Dedicated Slot Required** – The logic analyzer connects above the normal DIMM height so that there is no interference with adjacent DIMMs.

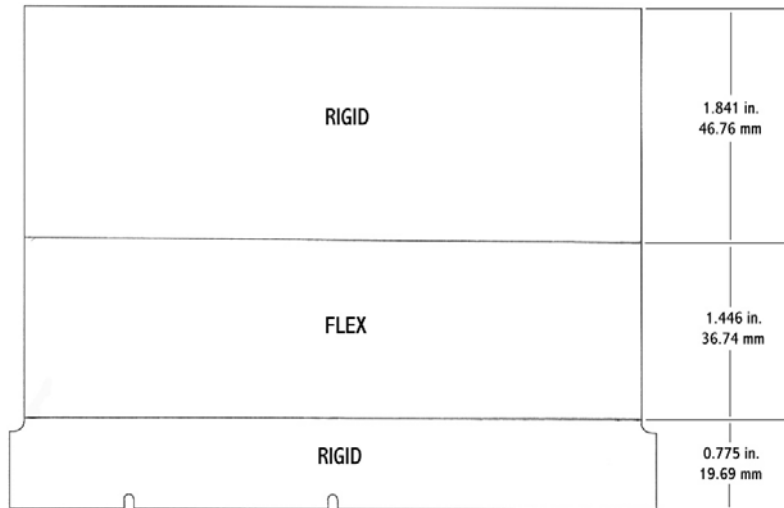
The SDIMM168 support package is included with this product and provides the following features:

- Synchronous acquisition of standard SDRAM cycles (default)
- 2 or 4-cycle read cycle latency
- Ability to acquire data on every rising edge of CK0
- Burst read and write lengths of 1, 2, 4, 8 or full page

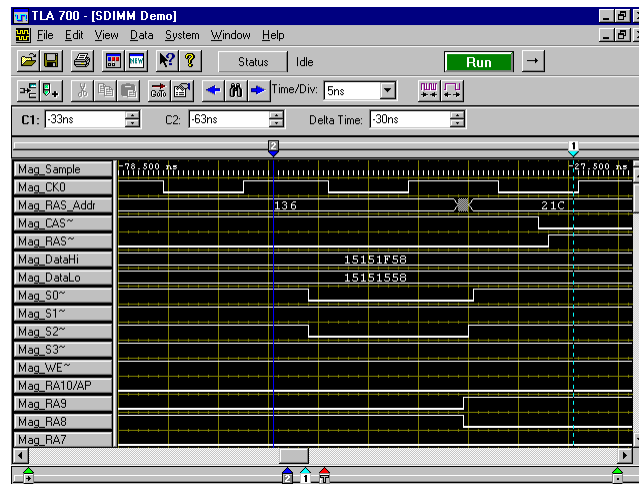
## LA Support / Configuration

A TLA5000, TLA600 or TLA700 with a minimum of 136-channels and four P6434 probes are required. Please contact us for information on adapting this product for use with newer probes (including the Tektronix P6860 probes and Tektronix P69xx Series probes).

## Mechanical Outline



## Timing Display



# State Display

TLA 700 - [SDIMM Demo]

File Edit View Data System Window Help

Status Idle Run

C1: SDIMMMEM 13 C2: SDIMMMEM 2 Delta Time: 211.461us

Sample	RAS Addr	CAS Addr	DataHi	DataLo	Control
< 0	42C	21C	15151F58	15151558	WRITE--WRITE&AUTOPRECHARGE (S0-)
< 1	42C	21C	15151F58	15151558	DESL--IGNORE COMMAND--DATA?
< 2	61E	21C	15151F58	15151558	PALL--PRECHARGE ALL BANK (S0-)
< 3	61E	028	15151F58	15151558	WRITE--WRITE&AUTOPRECHARGE (S0-)
< 4	61E	028	15151F58	15151558	DESL--IGNORE COMMAND--DATA?
< 5	42A	028	15151F58	15151558	PALL--PRECHARGE ALL BANK (S0-)
< 6	42A	00B	00001E00	00000008	READA--READ&AUTOPRECHARGE (S0-)
< 7	42A	00B	0D0D1FD0	0D0D0D38	DESL--IGNORE COMMAND--DATA?
< 8	408	00B	0C0D1FD0	0D0D0D38	PALL--PRECHARGE ALL BANK (S0-)
< 9	408	003	00001E00	00000008	READA--READ&AUTOPRECHARGE (S0-)
< 10	408	003	15151F58	15151558	DESL--IGNORE COMMAND--DATA?
< 11	403	003	15151F58	15151558	PALL--PRECHARGE ALL BANK (S0-)
< 12	403	02B	00001E00	00000008	READA--READ&AUTOPRECHARGE (S0-)
< 13	403	02B	63151E00	1563266C	DESL--IGNORE COMMAND--DATA?
< 14	42B	02B	63141E00	1463C668	PALL--PRECHARGE ALL BANK (S0-)
< 15	42B	02B	15151F58	15151558	WRITE--WRITE&AUTOPRECHARGE (S0-)
< 16	42B	02B	15151F58	15151558	DESL--IGNORE COMMAND--DATA?
< 17	6FE	02B	15151F58	15151558	PALL--PRECHARGE ALL BANK (S0-)
< 18	6FE	20B	00001E00	00000008	READA--READ&AUTOPRECHARGE (S0-)
< 19	6FE	20B	0D0D1FD0	0D0D0D38	DESL--IGNORE COMMAND--DATA?
< 20	608	20B	0F0F1FF0	0F4A4AF8	PALL--PRECHARGE ALL BANK (S0-)
< 21	608	207	00001E00	00000008	READA--READ&AUTOPRECHARGE (S0-)

## Ordering / Contact Information

**Part Number** NEX-SDIMMFLEX168

Includes: NEX- SDIMMFLEX168 adapter  
Software  
Manual

**Postal:** Nexus Technology, Inc.  
78 Northeastern Blvd. #2  
Nashua, NH 03062

**Telephone:** 877-595-8116

**Fax:** 877-595-8118

**Email:** support@nexustechnology.com  
quotes@nexustechnology.com  
techsupport@nexustechnology.com

**Website:** [www.nexustechnology.com](http://www.nexustechnology.com)

### Placing an Order

Credit Card orders can be placed directly at 877-595-8116.  
Purchase orders can be faxed to 877-595-8118.

Nexus Technology, Inc. reserves the right to make changes in design or specification at any time without notice. Nexus Technology, Inc. does not assume responsibility for use of any circuitry described. All trademarks are the property of their respective owners.