
NEX-SDIMMPC133



- Quick & easy connection between a 168-pin PC100 or PC133 DRAM DIMM Bus & Tek Logic Analyzer
- Impedance Matched/Controlled Design
- Logic Analyzer Setup Software gets you up and running fast
- Symbolic Disassembly of Bus Transactions
- Correlation with data acquired from other acquisition modules
- Can be used as an Extender Card for the DIMM under test
- Unique features when using a TLA600/TLA700 or TLA7AA4 and TLA7AB4:
 - Timing Analysis to 8GHz (125ps) on each channel
 - Simultaneous State and Timing acquisition on each channel
 - Trigger on setup/hold violations on all channels

General Description

The NEX-SDIMMPC133 Bus Adapter package is designed to connect to a PC100 or PC133 DRAM DIMM connector. It provides clocking, setup, symbolic display of information, and a quick convenient connection to the DIMM bus. NEX-SDIMMPC133 includes a 168-pin DIMM Bus Adapter Module, software to configure the Logic Analyzer and a Users Manual.

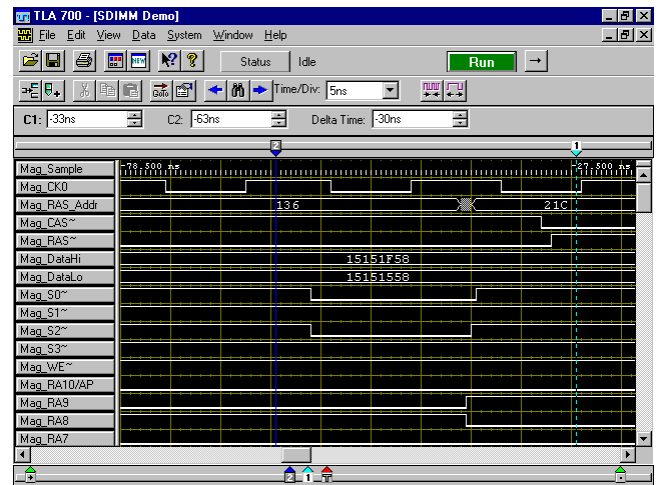
The NEX-SDIMMPC133 support package includes software which offers the following selections:

- Synchronous acquisition of standard SDRAM cycles (default)
- The ability to acquire data on every Rising Edge of CK0, CK1 or CK2
- 2 or 3-cycle Read Cycle latency
- Burst Read and Write lengths of 1, 2, 4, 8, or Full Page

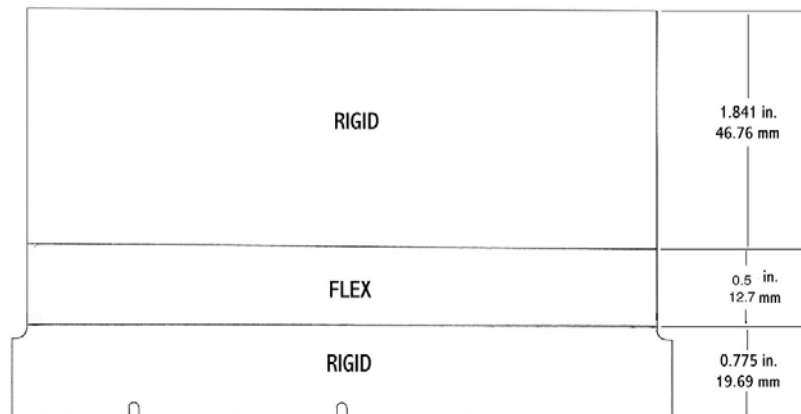
Symbolic Disassembly

Sample	RAS Addr	CAS Addr	DataHi	DataLo	Control
< 0	42C	21C	15151F58	15151558	WRITE--WRITE&AUTOPRECHARGE (S0-)
< 1	42C	21C	15151F58	15151558	DESL--IGNORE COMMAND--DATA?
< 2	61E	21C	15151F58	15151558	PALL--PRECHARGE ALL BANK (S0-)
< 3	61E	028	15151F58	15151558	WRITE--WRITE&AUTOPRECHARGE (S0-)
< 4	61E	028	15151F58	15151558	DESL--IGNORE COMMAND--DATA?
< 5	42A	028	15151F58	15151558	PALL--PRECHARGE ALL BANK (S0-)
< 6	42A	00B	00001E00	00000008	READA--READ&AUTOPRECHARGE (S0-)
< 7	42A	00B	0D0D1FD0	0D0D0D38	DESL--IGNORE COMMAND--DATA?
< 8	408	00B	0C0D1FD0	0D0D0D38	PALL--PRECHARGE ALL BANK (S0-)
< 9	408	003	00001E00	00000008	READA--READ&AUTOPRECHARGE (S0-)
< 10	408	003	15151F58	15151558	DESL--IGNORE COMMAND--DATA?
< 11	403	003	15151F58	15151558	PALL--PRECHARGE ALL BANK (S0-)
< 12	403	02B	00001E00	00000008	READA--READ&AUTOPRECHARGE (S0-)
< 13	403	02B	63151E00	1563266C	DESL--IGNORE COMMAND--DATA?
< 14	42B	02B	63141E00	1463C668	PALL--PRECHARGE ALL BANK (S0-)
< 15	42B	02B	15151F58	15151558	WRITE--WRITE&AUTOPRECHARGE (S0-)
< 16	42B	02B	15151F58	15151558	DESL--IGNORE COMMAND--DATA?
< 17	6FE	02B	15151F58	15151558	PALL--PRECHARGE ALL BANK (S0-)
< 18	6FE	20B	00001E00	00000008	READA--READ&AUTOPRECHARGE (S0-)
< 19	6FE	20B	0D0D1FD0	0D0D0D38	DESL--IGNORE COMMAND--DATA?
< 20	608	20B	0F0F1F70	0F4A4A78	PALL--PRECHARGE ALL BANK (S0-)
< 21	608	207	00001E00	00000008	READA--READ&AUTOPRECHARGE (S0-)

Timing Analysis



Mechanical Outline



Tektronix Logic Analyzers Supported

TLA600/TLA700 with a 136 channel acquisition module

Ordering / Contact Information

Part Number NEX-SDIMMPC133

Includes: NEX-SDIMMPC133 adapter board
NEX-SDIMMPC133 Software for TLA600/TLA700
Manual

Postal: Nexus Technology, Inc.
78 Northeastern Blvd. #2
Nashua, NH 03062

Telephone: 877-595-8116

Fax: 877-595-8118

Email: support@nexustechnology.com
quotes@nexustechnology.com
techsupport@nexustechnology.com

Website: www.nexustechnology.com

Placing an Order

Credit Card orders can be placed directly at 877-595-8116.
Purchase orders can be faxed to 877-595-8118.

Nexus Technology, Inc. reserves the right to make changes in design or specification at any time without notice. Nexus Technology, Inc. does not assume responsibility for use of any circuitry described. All trademarks are the property of their respective owners.