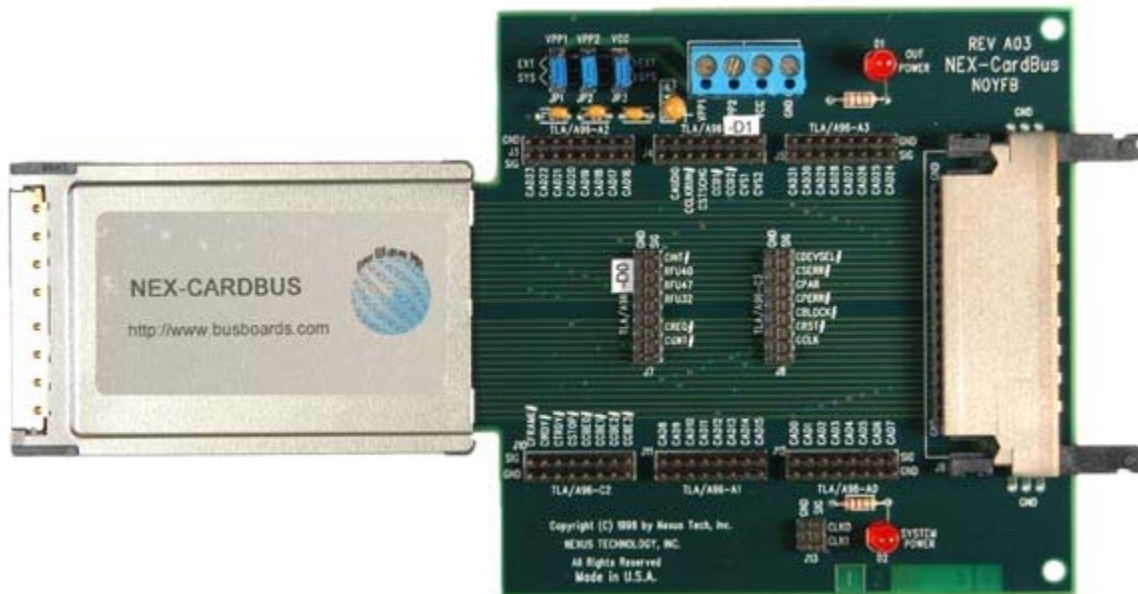


---

## NEX-CARDBUS

---



- Quick & easy connection between CARDBUS & Tek Logic Analyzer
- Logic Analyzer Setup Software gets you up and running fast
- Disassembly of CARDBUS
  - Cycle Identification
  - Config Cycle decoding including register evaluation
  - Ability to selectively ignore Idle and Wait States
- Correlation with data acquired from other acquisition modules
- Can be used as an Extender Card for the CARDBUS module under test
- DUT powered externally or by the system
- Unique features when using the TLA600 or TLA700
  - Timing Analysis to 8GHz (125ps) on each channel
  - Simultaneous State & Timing acquisition on each channel
  - Trigger on setup/hold violations on all channels

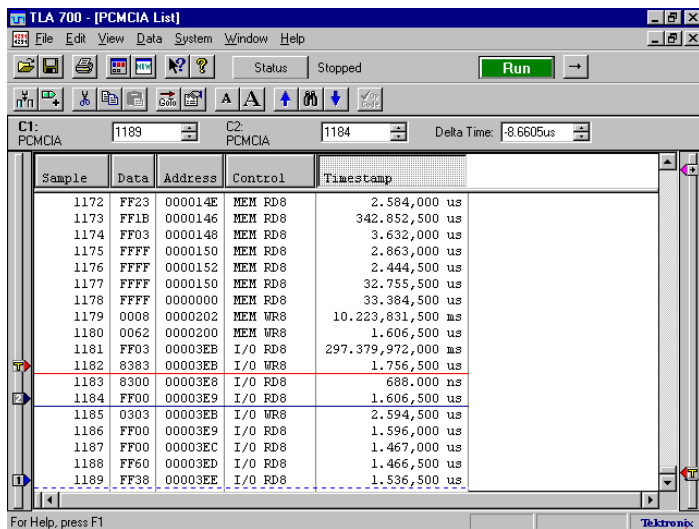
## General Description

The NEX-CARDBUS Adapter package is designed to plug into a CARDBUS slot. It provides clocking, setup, disassembly, and a quick convenient connection to CARDBUS. NEX-CARDBUS includes a CARDBUS Adapter Module, software to configure the Logic Analyzer and a Users Manual. The NEX-CARDBUS adapter module plugs into a CARDBUS slot.

Power supplied to the CARDBUS DUT (Device Under Test) is jumper selectable. It can be provided from the target system or from an external power supply through terminal block connections on the NEX-CARDBUS adapter.

While the NEX-CARDBUS package is being used to monitor the CARDBUS activity, another acquisition module can be used to monitor activity elsewhere within the system. The results of the two acquisitions can be correlated in time to determine the sequence of actions that occurred. For instance, the system microprocessor could be monitored and correlated with CARDBUS activity to verify the proper Read / Write operations.

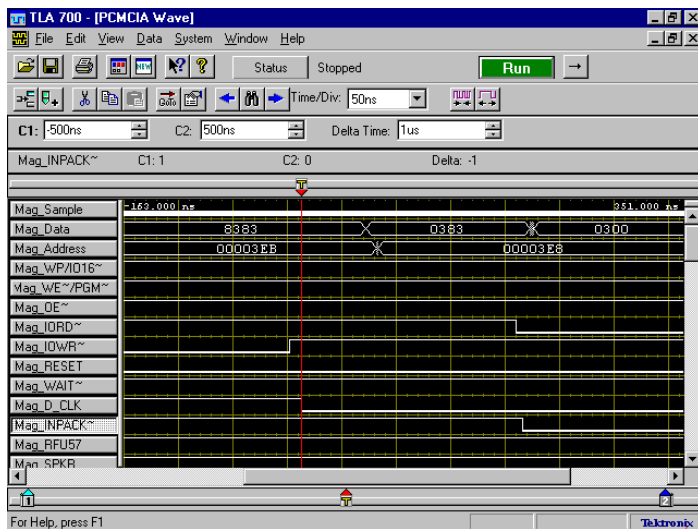
### Disassembly



The screenshot shows the 'TLA 700 - [PCMCIA List]' window. It displays a table of PCMCIA activity with columns for Sample, Data, Address, Control, and Timestamp. The table lists various memory reads and writes, with a red horizontal line highlighting the row for sample 1182.

Sample	Data	Address	Control	Timestamp
1172	FF23	000014E	MEM RD8	2.584,000 us
1173	FF1B	0000146	MEM RD8	342.852,500 us
1174	FF03	0000148	MEM RD8	3.632,000 us
1175	FFFF	0000150	MEM RD8	2.863,000 us
1176	FFFF	0000152	MEM RD8	2.444,500 us
1177	FFFF	0000150	MEM RD8	32.755,500 us
1178	FFFF	0000000	MEM RD8	33.384,500 us
1179	0008	0000202	MEM WR8	10.223,831,500 ms
1180	0062	0000200	MEM WR8	1.606,500 us
1181	FF03	00003EB	I/O RD8	297.379,972,000 ms
1182	8383	00003EB	I/O WR8	1.756,500 us
1183	8300	00003EB	I/O RD8	688.000 ns
1184	FF00	00003E9	I/O RD8	1.606,500 us
1185	0303	00003EB	I/O WR8	2.594,500 us
1186	FF00	00003E9	I/O RD8	1.596,000 us
1187	FF00	00003EC	I/O RD8	1.467,000 us
1188	FF60	00003ED	I/O RD8	1.466,500 us
1189	FF38	00003EE	I/O RD8	1.536,500 us

### Timing Analysis



## Tektronix Logic Analyzers Supported

TLA600 or TLA700 with a minimum of 68 channel acquisition module.

TLA510 or TLA520 (one acquisition module used).

DAS9200 with a 92A96, 92C96 (any memory depth).

## Ordering / Contact Information

**Part Number** NEX-CARDBUS

**Includes:** NEX-CARDBUS adapter  
Software for DAS9200, TLA5xx 3 ½" floppy, TLA600/700 3 ½" floppy  
Manual

**Postal:** Nexus Technology, Inc.  
78 Northeastern Blvd. #2  
Nashua, NH 03062

**Telephone:** 877-595-8116

**Fax:** 877-595-8118

**Email:** support@nexustechnology.com  
quotes@nexustechnology.com  
techsupport@nexustechnology.com

**Website:** [www.nexustechnology.com](http://www.nexustechnology.com)

### Placing an Order

Credit Card orders can be placed directly at 877-595-8116.  
Purchase orders can be faxed to 877-595-8118.

Nexus Technology, Inc. reserves the right to make changes in design or specification at any time without notice. Nexus Technology, Inc. does not assume responsibility for use of any circuitry described. All trademarks are the property of their respective owners.