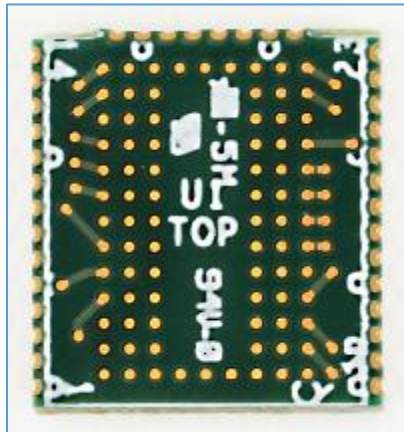


# DDR4 Interposers

DDR4 144 Ball EdgeProbe™ Interposer



## Key Features

- DDR4
- 144-ball
- x32
- EdgeProbe™ interposer
- High fidelity
- Data rates exceeding 3,200MT/s
- Enables oscilloscope probing
- Patented interposer/probe design

## Applications

- DDR4
  - Memory validation and debug
  - Monitoring bus traffic
  - Bus traffic measurement
  - Analog insight

- DDR4 rates above DDR4-3200

## EdgeProbe™ Interposer Technology



Nexus Technology's patent pending EdgeProbe™ technology enables our interposers to be virtually the same size as the memory

component. This is important because standard direct-attach interposers are significantly larger than the memory component which can potentially cause mechanical clearance problems. In other words, standard direct-attach interposers do not fit in all applications. EdgeProbe™ interposers fit in all applications.

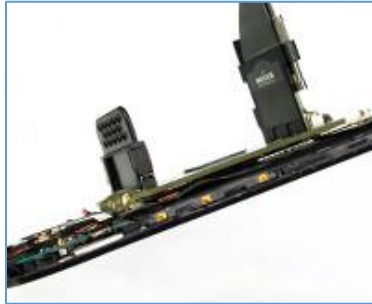
EdgeProbe™ interposers provide advanced analysis capabilities by integrating the oscilloscope probe in to the interposer itself. In doing so, the probe point moves extremely close to the component pad which is the optimal and least intrusive location.

## Software

Oscilloscope de-embedding software filters/removes interposer effects. Please contact Nexus for the appropriate de-embedding software for your interposer.

## Attachment Service

Nexus Technology's expert attachment service provides a ready-to-go test solution customized to your application. We will attach the interposer and any additional accessories to your application's target. We can also power-on and test your application to confirm functionality. Please contact us for more information.



## Product Configuration Table

Nomenclature	Interposer Type	Quantity Included
NEX-DDR4MCI144SCDAD	Address	1
NEX-DDR4MCI144SCDDH	Data High	1
NEX-DDR4MCI144SCDDL	Data Low	1

## Available Accessories

Type	Desc.	Quantity	Nomenclature
Solder Balls	Install solder balls on interposer	1	NEX-OPT-SOLDERBALLS-EP

## Mechanical Outlines

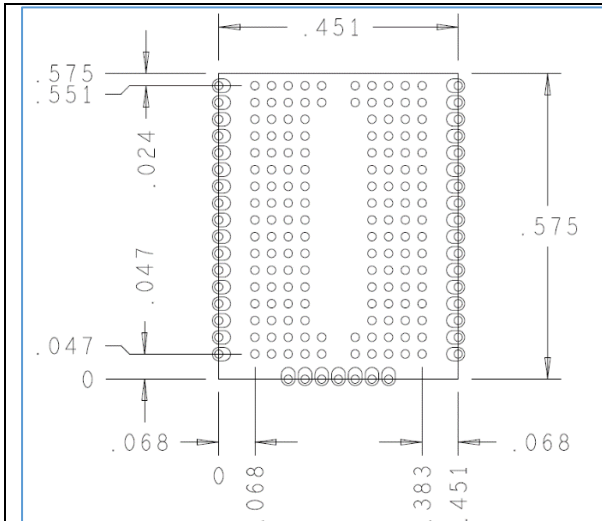


Figure 1 DDR4 144 Pin EdgeProbe(TM) Address Mechanical

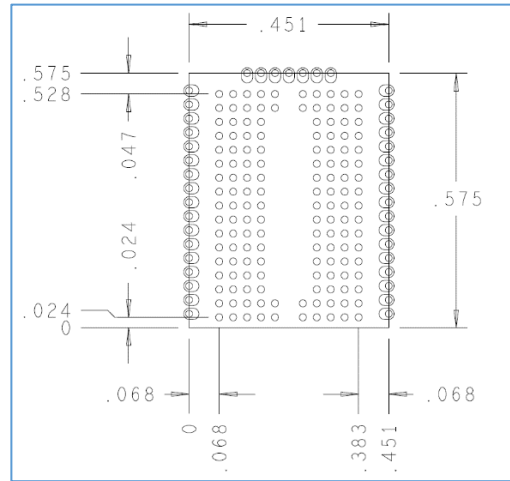


Figure 2 DDR4 144 Pin EdgeProbe(TM) Data High Mechanical

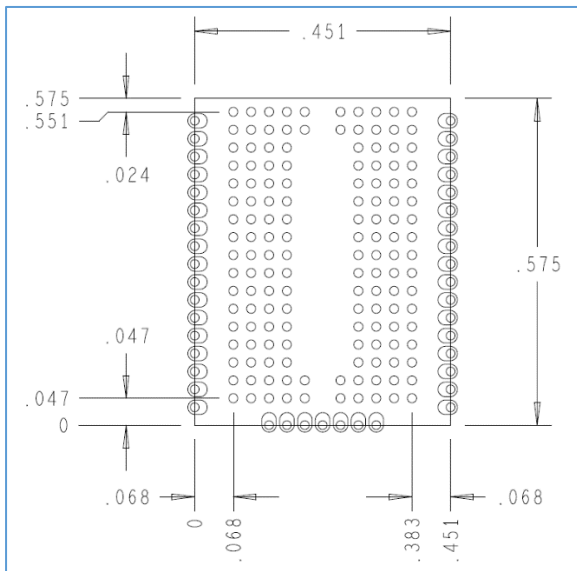


Figure 3 DDR4 144 Pin EdgeProbe(TM) Data Low Mechanical

## Contact Information

For more information, please contact us by telephone, email or mail as listed below. Normal business hours are 9:00 - 5:00 EDT/EST.

Web	<a href="http://www.nexustechnology.com">www.nexustechnology.com</a>
Telephone	877.595.8116
International	603.329.3083
Fax	877.595.8118
Address	78 Northeastern Blvd. Unit 2 Nashua, NH 03062
Email	<a href="mailto:support@nexustechnology.com">support@nexustechnology.com</a>