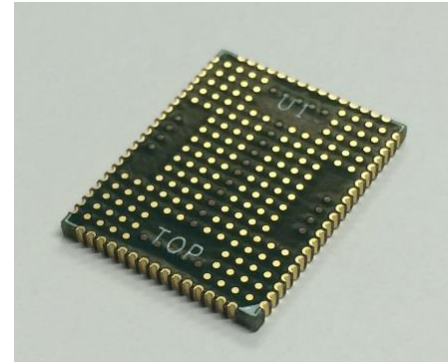


NAND Flash EdgeProbe™ Component Interposer

Solder Attach for Electrical Validation

- BGA 152/132 Ball Support
- Electrically and Mechanically Non-Intrusive
- Probe Existing Designs
- Validation as Seen by Memory Components
- Direct Attach EdgeProbe
- S Parameters Available for De-embedding Filters
- Support for NAND Flash Memory Devices
 - 1.0mm x 1.0mm pitch

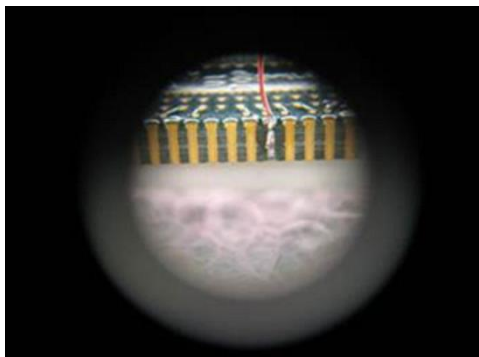


Component Interposer Design

Optimal NAND Flash validation requires analysis of the signals as seen by the memory components. This allows for the highest confidence that the signals captured are representative, contain little interference, and present the maximum possible data eye size. These component interposers allow for oscilloscope probing of the NAND Flash signals extremely close to the memory components.

Probe Installation

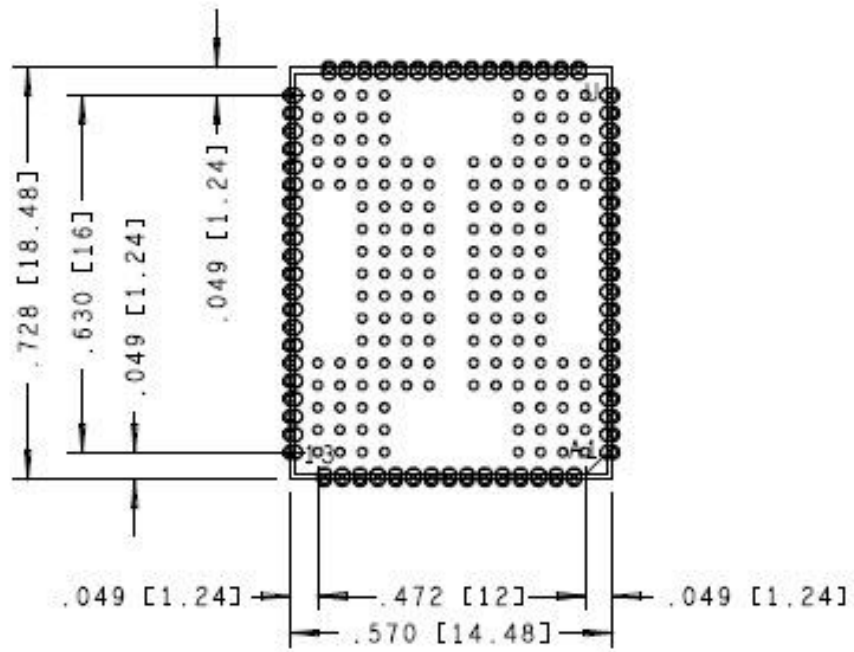
These interposers are installed by soldering the bottom side of the interposer to the NAND Flash BGA footprint on the target where the memory component would normally be soldered. The memory component can then be soldered to the top side of the interposer. These interposers were designed for lead-free or leaded solder. Please see the product manual for temperature profiles and further information on recommended attachment procedures.



Wire shown longer
for illustration only.



Mechanical Outline



NAND Flash 152/132 Mechanical Outline

Product Configuration Table

Nomenclature	Interposer Type	Description	Data Width
NEX-NAND152SCDS	Oscilloscope, EdgeProbe, Direct Solder	ONFi 152 ball NAND Flash Edge Probe™	BGA 152/132 Ball 1.0mm x 1.0mm pitch
NEX-OPT-SOLDERBALLS-DS	Direct Solder	Add solderballs to direct solder interposer	

Optional Attachment Service

Nexus offers an optional Attachment Service. We will remove the requested memory from your target/DIMM, install the interposer, re-ball and re-attach the memory onto the interposer.

Further Information

Please contact us by telephone, email or mail as listed below. Email is preferred. Normal business hours are 9:00 - 5:00 EST.

Telephone 877-595-8116

Fax 877-595-8118

Address 78 Northeastern Blvd. Unit 2 Nashua, NH 03062

Technical Support techsupport@nexustechnology.com

Quote Requests quotes@nexustechnology.com

General Information support@nexustechnology.com

