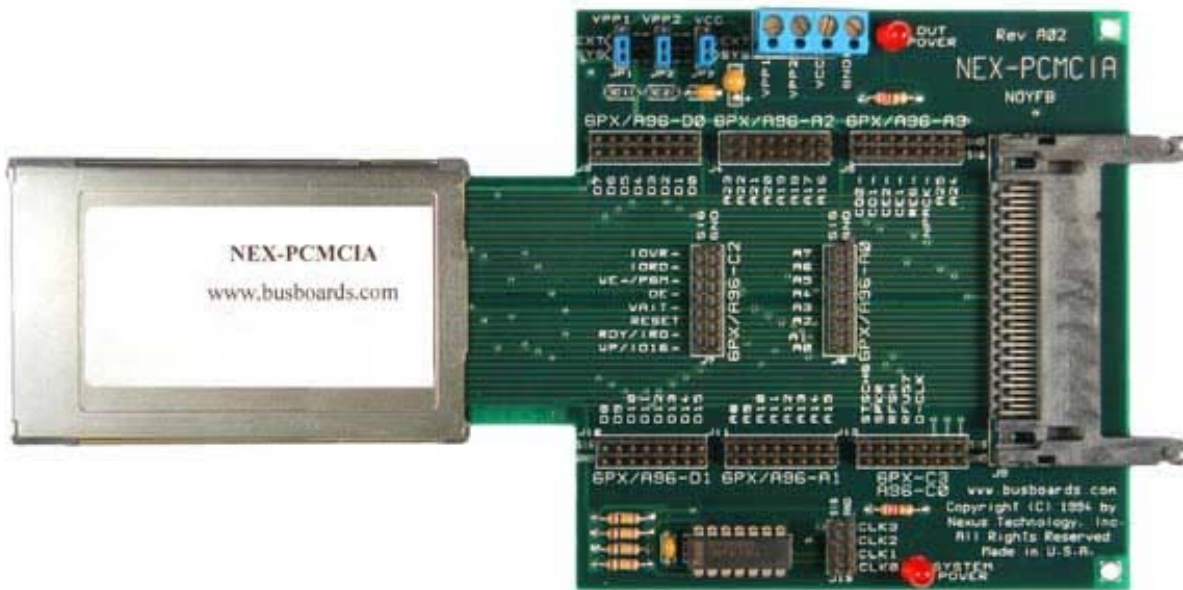

NEX-PCMCIA



- Quick & easy connection between a PCMCIA Bus & Tek Logic Analyzer
- Logic Analyzer Setup Software gets you up and running fast
- Symbolic Disassembly of Bus Transactions
- Correlation with data acquired from other acquisition modules
- Can be used as an Extender Card for the PCMCIA card under test
- DUT powered externally or by the system
- Unique features when using a TLA600 or TLA700Bullet 2.1
 - Timing Analysis to 8GHz (125ps) on each channel
 - Simultaneous State and Timing acquisition on each channel
 - Trigger on setup/hold violations on all channels

General Description

The NEX-PCMCIA Bus Adapter package is designed to plug into a PCMCIA slot. It provides clocking, setup, symbolic display of information, and a quick convenient connection to the PCMCIA bus.

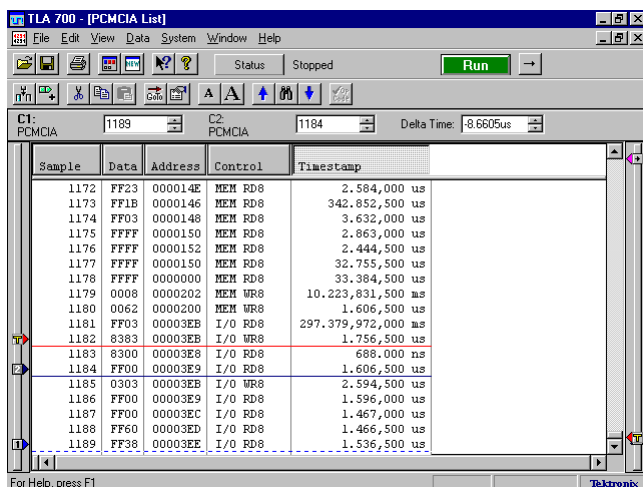
NEX-PCMCIA includes a PCMCIA Bus Adapter Module, software to configure the Logic Analyzer and a Users Manual.

The NEX-PCMCIA adapter module plugs into any type I, II, or III PCMCIA slot.

Power supplied to the PCMCIA DUT (Device Under Test) is jumper selectable. It can be provided from the target system or from an external power supply through terminal block connections on the NEX-PCMCIA adapter.

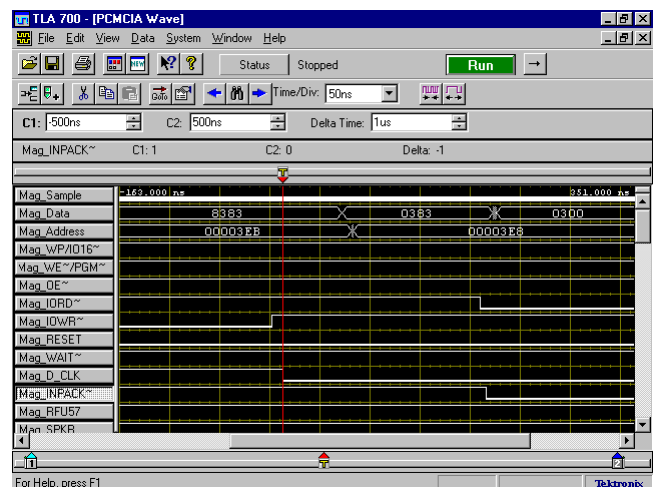
While the NEX-PCMCIA package is being used to monitor the PCMCIA bus activity, another acquisition module can be used to monitor activity elsewhere within the system. The results of the two acquisitions can be correlated in time to determine the sequence of actions that occurred. For instance, the system microprocessor could be monitored and correlated with PCMCIA activity to verify the proper Read / Write operations.

Symbolic Disassembly



Sample	Data	Address	Control	Timestamp
1172	FF23	000014E	MEM RD8	2.584,000 us
1173	FF1B	0000146	MEM RD8	342.852,500 us
1174	FF03	0000148	MEM RD8	3.632,000 us
1175	FFFF	0000150	MEM RD8	2.863,000 us
1176	FFFF	0000152	MEM RD8	2.444,500 us
1177	FFFF	0000150	MEM RD8	32.755,500 us
1178	FFFF	0000000	MEM RD8	33.384,500 us
1179	0008	0000202	MEM WR8	10.223,831,500 us
1180	0062	0000200	MEM WR8	1.606,500 us
1181	FF03	00003EB	I/O RD8	297.379,972,000 us
1182	8383	00003EB	I/O WR8	1.756,500 us
1183	8300	00003E8	I/O RD8	688,000 ns
1184	FF00	00003E9	I/O RD8	1.606,500 us
1185	0303	00003EB	I/O WR8	2.594,500 us
1186	FF00	00003E9	I/O RD8	1.596,000 us
1187	FF00	00003EC	I/O RD8	1.467,000 us
1188	FF60	00003ED	I/O RD8	1.466,500 us
1189	FF38	00003EE	I/O RD8	1.536,500 us

Timing Analysis



Tektronix Logic Analyzers Supported

- TLA600 or TLA700 with a minimum requirement of 68 channel acquisition module
- TLA510 or TLA520 (one acquisition module used)
- DAS9200 with a 92A96, 92C96 (any memory depth) or 92A90
- Prism 3000 with a 32GPX or 32GPD

Ordering / Contact Information

Part Number NEX-PCMCIA

Includes: NEX-PCMCIA adapter board
NEX-PCMCIA Software for: DAS9200, TLA510/520 3½" floppy, TLA600/700 3½" floppy
Support for DAS9200 5¼" drive or Prism 3000 available upon request
Manual

Postal: Nexus Technology, Inc.
78 Northeastern Blvd. #2
Nashua, NH 03062

Telephone: 877-595-8116

Fax: 877-595-8118

Email: support@nexustechnology.com
quotes@nexustechnology.com
techsupport@nexustechnology.com

Website: www.nexustechnology.com

Placing an Order

Credit Card orders can be placed directly at 877-595-8116.
Purchase orders can be faxed to 877-595-8118.

Nexus Technology, Inc. reserves the right to make changes in design or specification at any time without notice. Nexus Technology, Inc. does not assume responsibility for use of any circuitry described. All trademarks are the property of their respective owners.