
DDR 4/3/2 Memory Component Sockets

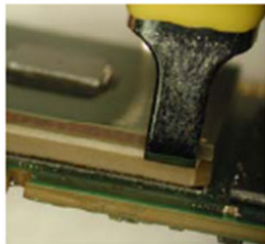
Many Nexus Technology DDR Products are available with sockets. This option allows the end user to easily install and remove memory components. This document describes this process.

Memory IC Insertion

Place the memory IC onto the socket making sure the solder balls are aligned properly on the socket. Apply a load of 45 grams per ball evenly on the top of the memory IC to engage it in to the contacts. A rigid plate matching the profile of the device may be used to assist in distributing the force on the device. When properly inserted the memory IC should be parallel to the top edges of the socket.

Memory IC Removal

Using the provided extraction tool, grip the corner of the device and apply a light force in by tilting the extraction tool as you pull upward. Once the corner of the device is free from the connector contacts the entire device can be easily removed.



Remove Corner First



Socket Extraction Tool

Number of insertions

The sockets are specified for 100 insertion/removal cycles. Each device inserted into the sockets is rated at 3 insertion/removal cycles, but typically will last as many as 7 insertions/removals – after which the solder balls should be replaced.

Table of currently supported sockets

Description	Socket description
DDR2, x8 memory configuration	60 ball 0.45mm diameter ball 0.35mm exposure/height +/-0.05
DDR3, x8 memory configuration	78 ball 0.45mm diameter ball 0.35mm exposure/height +/-0.05
DDR3, x16 memory configuration	96 ball 0.45mm diameter ball 0.35mm exposure/height +/-0.05
DDR4, x8 memory configuration	78 ball 0.45mm diameter ball 0.35mm exposure/height +/-0.05
DDR4, x16 memory configuration	96 ball 0.45mm diameter ball 0.35mm exposure/height +/-0.05

Nexus Technology Contact Information

Postal: Nexus Technology, Inc.
78 Northeastern Blvd. #2
Nashua, NH 03062

Telephone: 877-595-8116

Fax: 877-595-8118

Email: Technical Support **techsupport@nexustechnology.com**
General Support **support@nexustechnology.com**
Quote Requests **quotes@nexustechnology.com**

Website: www.nexustechnology.com

Placing an Order

Credit Card orders can be placed directly at 877-595-8116.
Purchase orders can be faxed to 877-595-8118.

Nexus Technology, Inc. reserves the right to make changes in design or specification at any time without notice. Nexus Technology, Inc. does not assume responsibility for use of any circuitry described. All trademarks are the property of their respective owners.