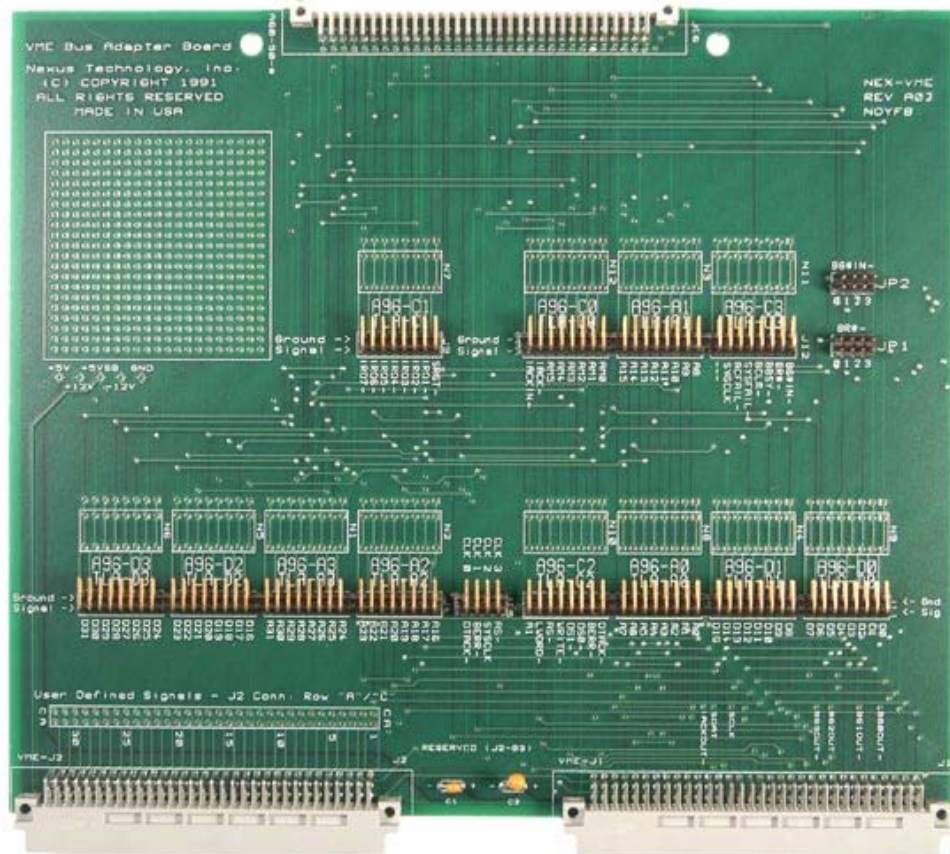


## NEX-VME



- Quick & easy connection between a VME Bus & Tek Logic Analyzer
- Logic Analyzer Setup Software gets you up and running fast
- Symbolic Disassembly of Bus Transactions
- Correlation with data acquired from other acquisition modules
- User-defined signals available for probing
- Unique features when using the TLA600 or TLA700
  - Timing Analysis to 8GHz (125ps) on each channel
  - Simultaneous State and Timing acquisition on each channel
  - Trigger on setup/hold violations on all channels

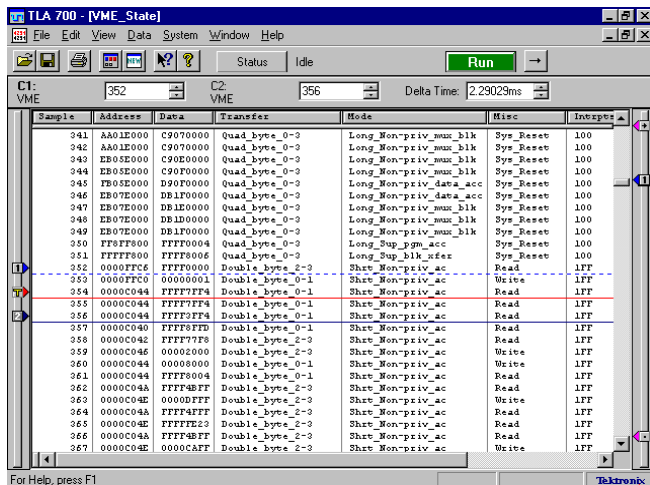
## General Description

The NEX-VME Bus Adapter package provides clocking, setup, symbolic display of information, and a quick convenient connection to the VME bus. NEX-VME includes a VME Bus Adapter Module, software to configure the Logic Analyzer and a Users Manual.

The NEX-VME adapter module plugs into a “B”, “C”, or “D” size VME compatible backplane.

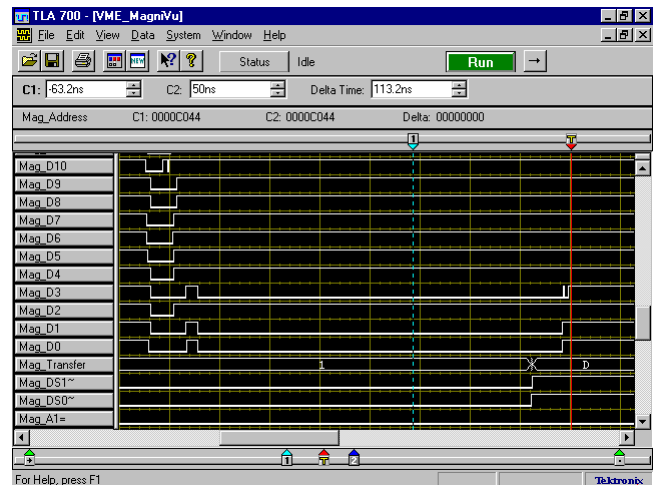
While the NEX-VME package is being used to monitor the VME bus activity, another acquisition module can be used to monitor activity elsewhere within the system. The results of the two acquisitions can be correlated in time to determine the sequence of actions that occurred. For instance, the system microprocessor could be monitored and correlated with VME activity to verify the proper Read / Write operations.

## Symbolic Disassembly



Sample	Address	Data	Transfer	Mode	Misc	Inexp
341	A01E000	C9070000	Quad_byte_0-3	Long_Mon_priv_mmu_blk	Sys_Reset	100
342	A01E000	C9070000	Quad_byte_0-3	Long_Mon_priv_mmu_blk	Sys_Reset	100
343	E80E000	C90E0000	Quad_byte_0-3	Long_Mon_priv_mmu_blk	Sys_Reset	100
344	E80E000	C90F0000	Quad_byte_0-3	Long_Mon_priv_mmu_blk	Sys_Reset	100
345	F80E000	D90F0000	Quad_byte_0-3	Long_Mon_priv_data_acc	Sys_Reset	100
346	E80E000	DB1F0000	Quad_byte_0-3	Long_Mon_priv_data_acc	Sys_Reset	100
347	E80E000	DB1D0000	Quad_byte_0-3	Long_Mon_priv_mmu_blk	Sys_Reset	100
348	E80E000	DB1D0000	Quad_byte_0-3	Long_Mon_priv_mmu_blk	Sys_Reset	100
349	E80E000	DB1F0000	Quad_byte_0-3	Long_Mon_priv_mmu_blk	Sys_Reset	100
350	FF8F000	FFFF0004	Quad_byte_0-3	Long_Sup_pg_m_acc	Sys_Reset	100
351	FFFF000	FFFF8006	Quad_byte_0-3	Long_Sup_blk_addr	Sys_Reset	100
352	0000FFC6	FFFF0000	Double_byte_2-0	Shift_Mon_priv_ac	Read	1FF
353	0000FFC0	00000001	Double_byte_0-1	Shift_Mon_priv_ac	Write	1FF
354	0000C044	FFFF7FF4	Double_byte_0-1	Shift_Mon_priv_ac	Read	1FF
355	0000C044	FFFF7FF4	Double_byte_0-1	Shift_Mon_priv_ac	Read	1FF
356	0000C044	FFFF7FF4	Double_byte_0-1	Shift_Mon_priv_ac	Read	1FF
357	0000C040	FFFF0FFD	Double_byte_0-1	Shift_Mon_priv_ac	Read	1FF
358	0000C042	FFFF7FF8	Double_byte_2-0	Shift_Mon_priv_ac	Read	1FF
359	0000C046	00000000	Double_byte_2-0	Shift_Mon_priv_ac	Write	1FF
360	0000C044	00008000	Double_byte_0-1	Shift_Mon_priv_ac	Write	1FF
361	0000C044	FFFF8004	Double_byte_0-1	Shift_Mon_priv_ac	Read	1FF
362	0000C04A	FFFF4BFF	Double_byte_2-0	Shift_Mon_priv_ac	Read	1FF
363	0000C04E	000000FF	Double_byte_2-0	Shift_Mon_priv_ac	Write	1FF
364	0000C04A	FFFF4BFF	Double_byte_2-0	Shift_Mon_priv_ac	Read	1FF
365	0000C04E	FFFFE23	Double_byte_2-0	Shift_Mon_priv_ac	Read	1FF
366	0000C04A	FFFF4BFF	Double_byte_2-0	Shift_Mon_priv_ac	Read	1FF
367	0000C04E	0000CAFF	Double_byte_2-0	Shift_Mon_priv_ac	Write	1FF

## Timing Analysis



## Tektronix Logic Analyzers Supported

- TLA600 or TLA700 with a minimum of 102 channel acquisition module
- TLA510 or TLA520 (one acquisition module used)
- DAS9200 with a 92A96, 92C96 (any memory depth) or 92A90
- Prism 3000 with a 32GPX or 32GPD

## Ordering/ Contact Information

**Part Number** NEX-VME

**Includes:** NEX-VME adapter board  
Software for DAS9200, TLA510/520 3½" floppy, TLA600/700 3½" floppy  
Support for DAS9200 5¼" drive or Prism 3000 available upon request  
Manual

**Postal:** Nexus Technology, Inc.  
78 Northeastern Blvd. #2  
Nashua, NH 03062

**Telephone:** 877-595-8116

**Fax:** 877-595-8118

**Email:** support@nexustechnology.com  
quotes@nexustechnology.com  
techsupport@nexustechnology.com

**Website:** [www.nexustechnology.com](http://www.nexustechnology.com)

### Placing an Order

Credit Card orders can be placed directly at 877-595-8116.  
Purchase orders can be faxed to 877-595-8118.