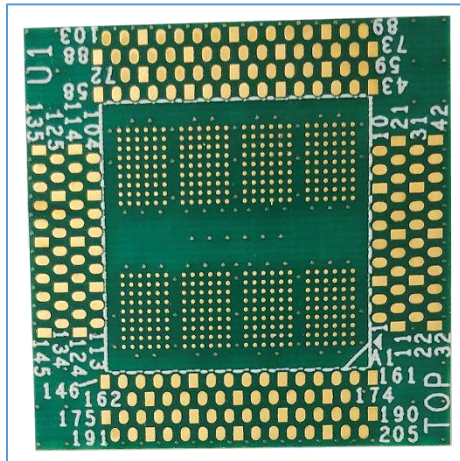


LPDDR4 & LPDDR4x Interposers

LPDDR4/4x 432 Ball XH Series Direct Attach Interposer



Key Features

- LPDDR4/4x
- XH Series Universal Probe Interposer
- 432-ball
- 4 Channel x16 Memory Component
- High fidelity
- Enables oscilloscope probing

Applications

- LPDDR4/4x
 - Memory validation and debug
 - Monitoring bus traffic
 - Bus traffic measurement
 - Analog insight

Simulation and De-Embedding

S-Parameters are included for target simulation and the creation of de-embedding filters for use with an oscilloscope.

Attachment Service

Nexus Technology's expert attachment service provides a ready-to-go test solution customized to your application. We will attach the interposer and any additional accessories to your application's target. We can also power-on and test your application to confirm functionality. Please contact us for more information.



LPDDR4/4x 432 Ball XH Series Direct Attach Interposer

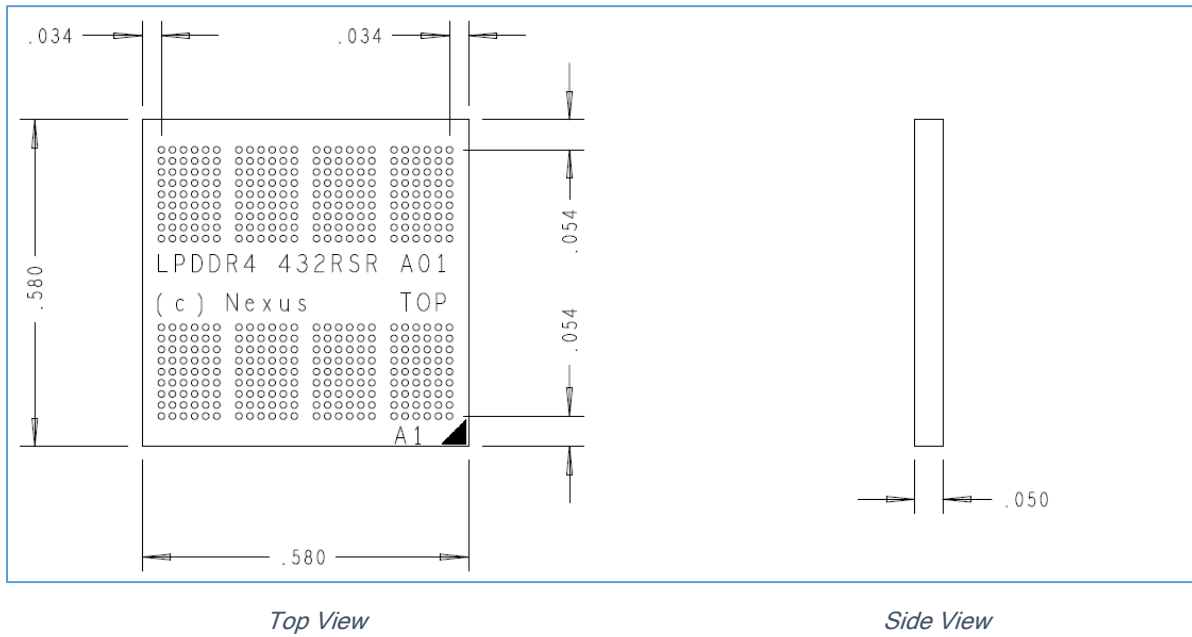


Figure 2 LPDDR4 432 Ball Riser Mechanical Dimensions

Probe Point Signal List

| TEST Point | Signal | TEST Point | Signal | TEST Point | Signal | TEST Point | Signal |
|------------|----------|------------|---------|------------|----------|------------|----------|
| 1 | DQ4_A | 53 | GROUND | 105 | CKE2_D | 157 | CLK_t_A |
| 2 | DQ3_A | 54 | DQ6_D | 106 | GROUND | 158 | CLK_c_A |
| 3 | GROUND | 55 | CA4_D | 107 | DQS0_t_C | 159 | DQ0_A |
| 4 | DQS0_t_A | 56 | DQ8_D | 108 | DQS0_c_C | 160 | DQ1_A |
| 5 | DQS0_c_A | 57 | DQ10_D | 109 | DQS1_c_C | 161 | GROUND |
| 6 | DQS1_c_A | 58 | GROUND | 110 | DQS1_t_C | 162 | CA4_C |
| 7 | DQS1_t_A | 59 | DQ2_B | 111 | GROUND | 163 | GROUND |
| 8 | GROUND | 60 | DQ4_B | 112 | DQ11_C | 164 | CKE0_C |
| 9 | CS3_B | 61 | GROUND | 113 | DQ10_C | 165 | CA0_C |
| 10 | CKE0_B | 62 | CLK_c_B | 114 | GROUND | 166 | DQ0_C |
| 11 | GROUND | 63 | CLK_t_B | 115 | DQ11_D | 167 | ODT_CA_C |
| 12 | DMI0_A | 64 | DQ9_B | 116 | DQS1_t_D | 168 | GROUND |
| 13 | CS2_A | 65 | DQ10_B | 117 | DQS1_c_D | 169 | DQ3_C |
| 14 | DQS1_t_B | 66 | GROUND | 118 | DQ15_D | 170 | CKE3_A |
| 15 | DQS1_c_B | 67 | DQ3_D | 119 | GROUND | 171 | CA4_A |
| 16 | GROUND | 68 | DQ0_D | 120 | DQS0_c_D | 172 | CKE0_A |
| 17 | DQ7_B | 69 | CLK_c_D | 121 | DQS0_t_D | 173 | GROUND |
| 18 | DQS0_c_B | 70 | CLK_t_D | 122 | CKE3_C | 174 | CA0_A |
| 19 | DQS0_t_B | 71 | GROUND | 123 | DMI1_C | 175 | GROUND |
| 20 | DQ3_B | 72 | DQ9_D | 124 | GROUND | 176 | DQ12_C |
| 21 | GROUND | 73 | GROUND | 125 | CKE1_D | 177 | CA5_C |
| 22 | CS0_A | 74 | DQ1_B | 126 | DMI1_D | 178 | DQ6_C |
| 23 | DQ7_A | 75 | DQ5_B | 127 | GROUND | 179 | CA2_C |
| 24 | GROUND | 76 | CA2_B | 128 | CS0_D | 180 | GROUND |
| 25 | CKE2_A | 77 | DQ14_B | 129 | CS2_D | 181 | DQ5_C |
| 26 | DQ15_A | 78 | GROUND | 130 | DQ7_C | 182 | DMI0_C |
| 27 | DQ15_B | 79 | CA5_B | 131 | CS3_C | 183 | DQ12_A |
| 28 | CKE1_B | 80 | DQ12_B | 132 | GROUND | 184 | CA5_A |
| 29 | GROUND | 81 | DQ11_B | 133 | CKE1_C | 185 | GROUND |
| 30 | ODT_CA_B | 82 | DQ5_D | 134 | CS0_C | 186 | DQ14_A |
| 31 | CS0_B | 83 | GROUND | 135 | GROUND | 187 | CA1_A |
| 32 | GROUND | 84 | CA2_D | 136 | CKE3_D | 188 | DQ5_A |
| 33 | CS1_A | 85 | CS1_D | 137 | DQ7_D | 189 | DQ2_A |
| 34 | ODT_CA_A | 86 | CA5_D | 138 | CS3_D | 190 | GROUND |
| 35 | CS3_A | 87 | DQ12_D | 139 | ODT_CA_D | 191 | DQ13_C |
| 36 | CKE1_A | 88 | GROUND | 140 | GROUND | 192 | CA3_C |
| 37 | GROUND | 89 | CA1_B | 141 | CS2_C | 193 | GROUND |
| 38 | CKE2_B | 90 | DQ6_B | 142 | CKE2_C | 194 | DQ14_C |
| 39 | CKE3_B | 91 | GROUND | 143 | DQ15_C | 195 | CA1_C |
| 40 | DMI0_B | 92 | CA3_B | 144 | CS1_C | 196 | DQ4_C |
| 41 | CS2_B | 93 | DQ13_B | 145 | GROUND | 197 | DMI1_A |
| 42 | GROUND | 94 | RESET_n | 146 | GROUND | 198 | GROUND |
| 43 | GROUND | 95 | DQ2_D | 147 | DQ9_C | 199 | DQ10_A |
| 44 | DQ0_B | 96 | GROUND | 148 | DQ8_C | 200 | DQ9_A |
| 45 | CA0_B | 97 | DQ1_D | 149 | CLK_t_C | 201 | DQ13_A |
| 46 | CS1_B | 98 | DQ4_D | 150 | CLK_c_C | 202 | CA3_A |
| 47 | CA4_B | 99 | CA1_D | 151 | GROUND | 203 | GROUND |
| 48 | GROUND | 100 | DQ14_D | 152 | DQ1_C | 204 | DQ6_A |
| 49 | DQ8_B | 101 | GROUND | 153 | DQ2_C | 205 | CA2_A |
| 50 | DMI1_B | 102 | CA3_D | 154 | DQ11_A | | |
| 51 | DMI0_D | 103 | DQ13_D | 155 | DQ8_A | | |
| 52 | CA0_D | 104 | CKE0_D | 156 | GROUND | | |

Probe Point Locations

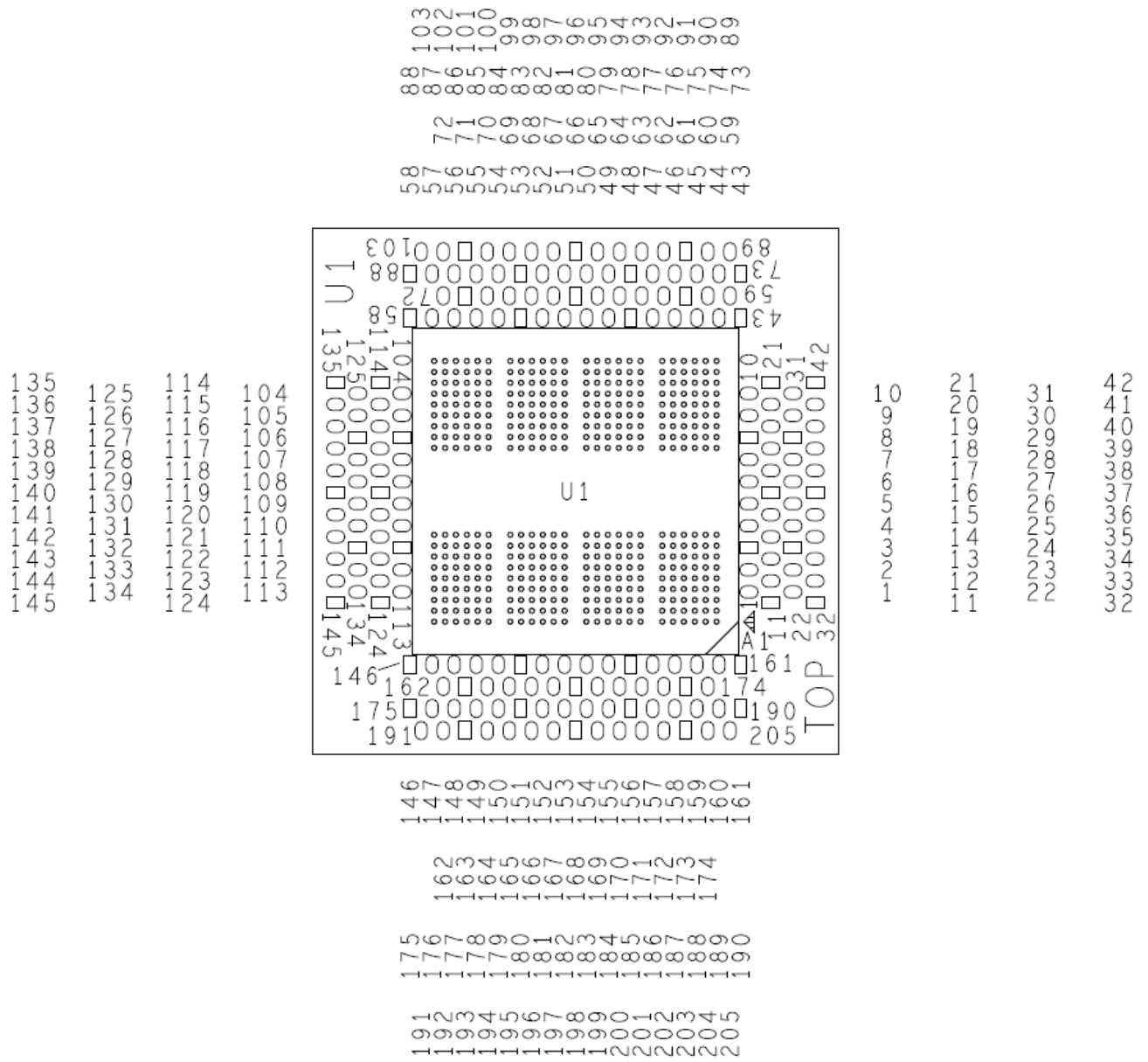


Figure 3 LPDDR4 432 Ball XH Series Direct Attach Interposer Probe Point Locations

Product Configuration Table

| Nomenclature | Solder Balls on Interposer | Riser Included |
|---------------------|----------------------------|----------------|
| NEX-LP4MCI432XHSCDS | Yes | No |

Available Accessories

| Type | Desc. | Quantity | Nomenclature |
|---------------|---|----------|---------------------|
| Riser | Riser with Solder balls added elevates interposer 0.50" | 1 | NEX-RSRLPDDR4432 |
| Memory Socket | Memory socket | 1 | NEX-SOCKETLPDDR4432 |

Attachment Service Options

| Attachment Service Level | Description |
|--------------------------|---------------------------------|
| Attachment Service | Contact us for more information |

Contact Information

For more information, please contact us by telephone, email or mail as listed below. Normal business hours are 9:00 - 5:00 EDT/EST.

| | |
|---------------|--|
| Web | www.nexustechnology.com |
| Telephone | 877.595.8116 |
| International | 603.329.3083 |
| Fax | 877.595.8118 |
| Address | 78 Northeastern Blvd. Unit 2 Nashua, NH 03062 |
| Email | support@nexustechnology.com |