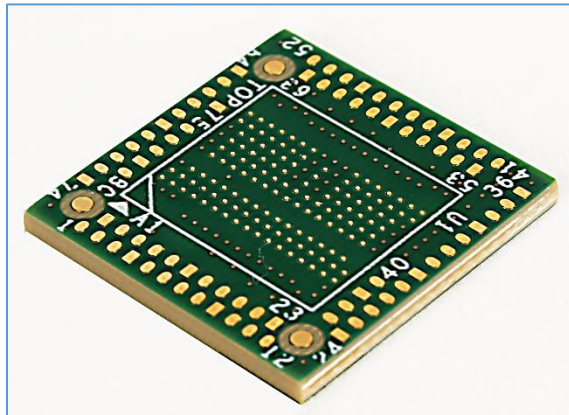


LPDDR4 & LPDDR4x Interposer

LPDDR4/4x 149 Ball XH Series Direct Attach Interposer



Key Features

- LPDDR4/4x
- XH Series Universal Probe Interposer
- 149 ball
- High fidelity
- Low and high speed operation
- Enables oscilloscope probing

Applications

- LPDDR4/4x
 - Memory validation and debug
 - Monitoring bus traffic
 - Bus traffic measurement
 - Analog insight

Simulation and De-Embedding

Oscilloscope de-embedding software filters/removes interposer effects. Please contact Nexus for the appropriate de-embedding software for your interposer.

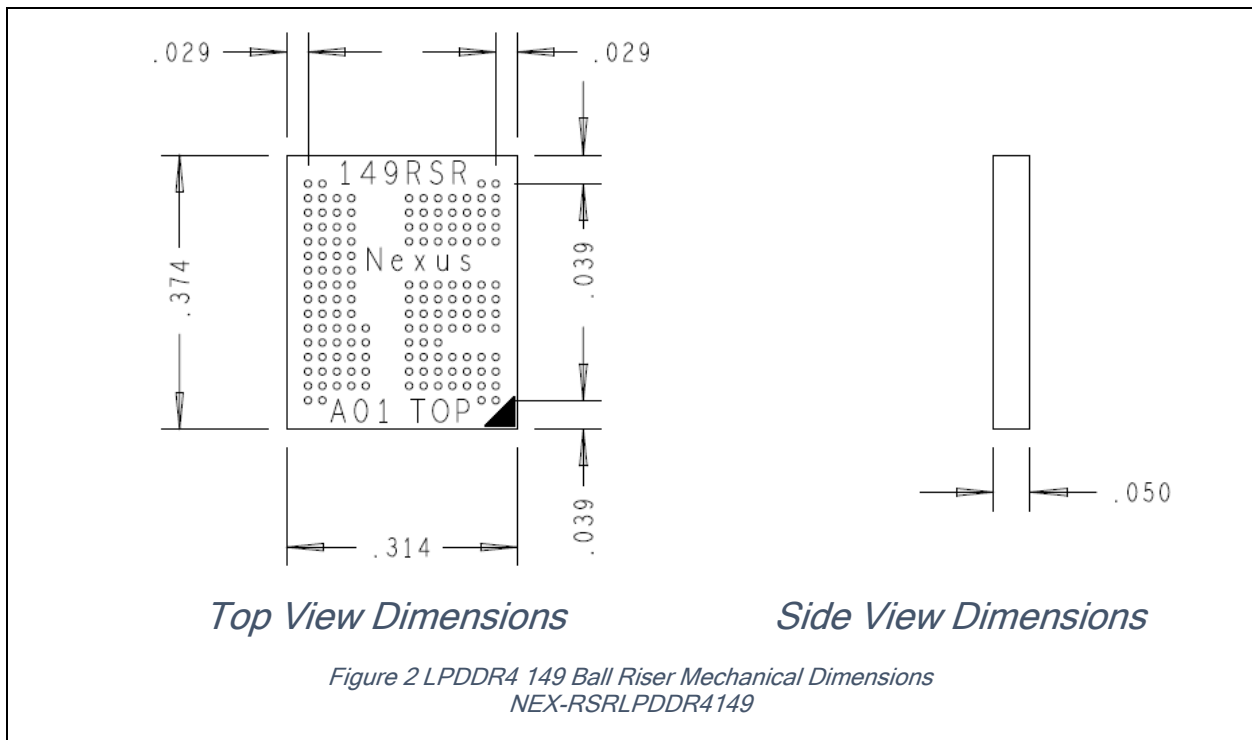
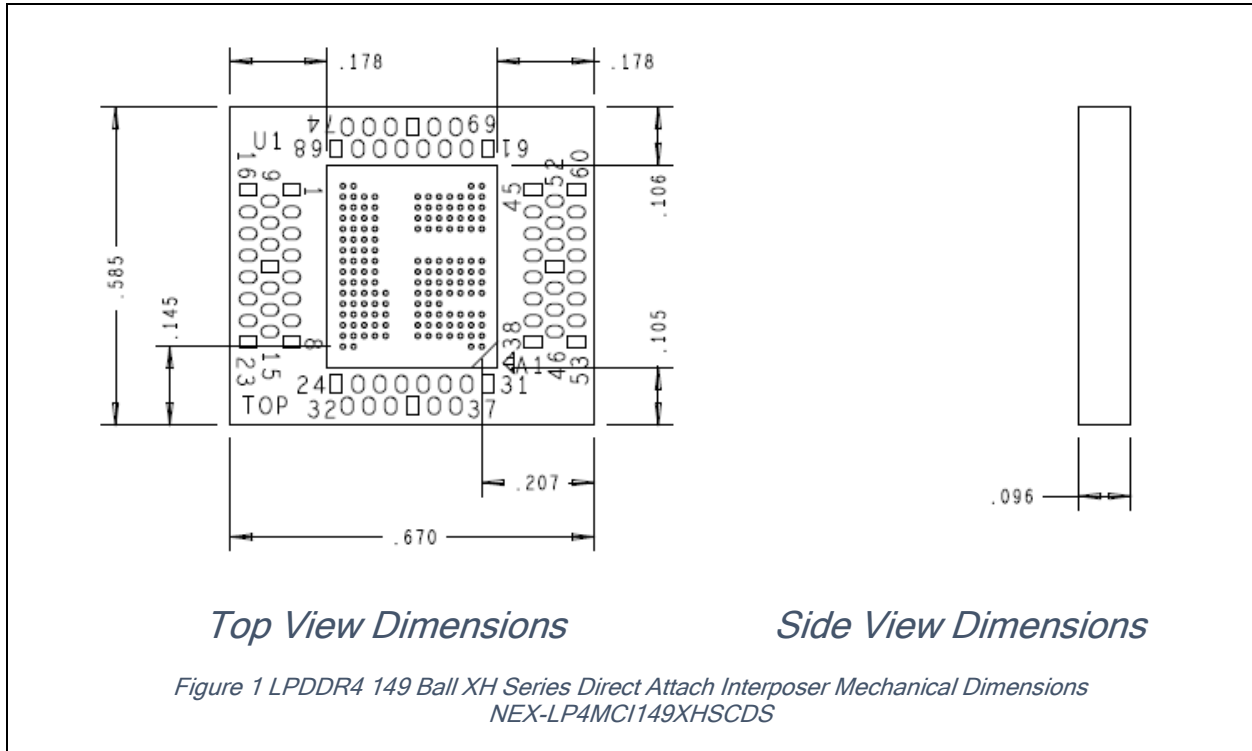
Attachment Service

Nexus Technology's expert attachment service provides a ready-to-go test solution customized to your application. We will attach the interposer and any additional accessories to your application's target. We can also power-on and test your application to confirm functionality. Please contact us for more information.



Figure 1 - Direct Attach interposer installed under a memory component

Mechanical Outline



Probe Point Signal List

TEST Point	Signal	TEST Point	Signal	TEST Point	Signal	TEST Point	Signal
1	GROUND	20	DQS1_t	39	NC/VSF1	57	DQ11
2	CA5	21	IO3/DAT3	40	NC/VSF2	58	DQ5
3	RESET_n	22	IO1/DAT1	41	DQ10	59	DQ2
4	CLK_c	23	GROUND	42	DMI1	60	GROUND
5	CLK_t	24	GROUND	43	DQ3	61	GROUND
6	IO0/DAT0	25	CE_n/NC	44	DQ0	62	CS1
7	IO4/DAT4	26	R/B_n/VSF9	45	GROUND	63	CA4
8	GROUND	27	WP_n/VSF7	46	NC/VSF3	64	CA3
9	DQS0_t	28	ALE/DS	47	NC/VSF6	65	DQ4
10	DQS0_c	29	IO2/DAT2	48	DQ8	66	DQ7
11	DQ15	30	ODTCA	49	GROUND	67	DQ6
12	GROUND	31	GROUND	50	DQ13	68	GROUND
13	DQ12	32	IO6/DAT6	51	DQ14	69	DQ1
14	RE_n/RST_n	33	IO7/DAT7	52	DMI0	70	CA0
15	WE_n/CMD	34	IO5/DAT5	53	GROUND	71	GROUND
16	GROUND	35	GROUND	54	NC/VSF5	72	CA1
17	CKE0	36	CLE/CLK	55	NC/VSF4	73	CA2
18	CKE1	37	DQ9	56	NC/VSF8	74	CS0
19	DQS1_c	38	GROUND				

Product Configuration Table

Nomenclature	Solder Balls on Interposer	Riser Included
NEX-LP4MCI149XHSCDS	Yes	No

Available Accessories

Type	Desc.	Quantity	Nomenclature
Riser	LPDDR4 149-Ball Riser elevates interposer 0.050"	1	NEX-RSRLPDDR4149 ¹

¹ P/N NEX-RSRLPDDR4149 includes solderballs.

Contact Information

For more information, please contact us by telephone, email or mail as listed below. Normal business hours are 9:00 - 5:00 EDT/EST.

Web	www.nexustechnology.com
Telephone	877.595.8116
International	603.329.3083
Fax	877.595.8118
Address	78 Northeastern Blvd. Unit 2 Nashua, NH 03062
Email	support@nexustechnology.com