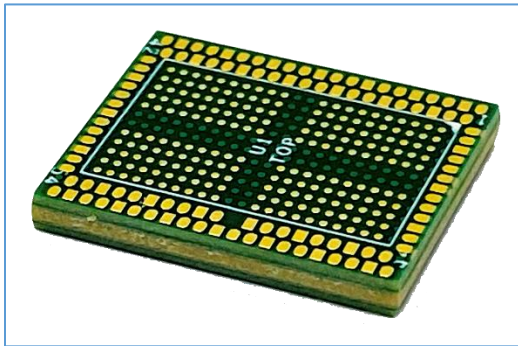


LPDDR4 & LPDDR4x Interposers

LPDDR4/4x 200 Ball XH Series Direct Attach Interposer



Key Features

- LPDDR4/4x
- XH Series Universal Probe Interposer
- 200 ball
- High fidelity
- Low and high speed operation
- Enables oscilloscope probing
- 2 Channel x16 Memory Component

Applications

- LPDDR4/4x
 - Memory validation and debug
 - Monitoring bus traffic
 - Bus traffic measurement
 - Analog insight
- LPDDR4 rates above LPDDR4-4267

Simulation and De-Embedding

Oscilloscope de-embedding software filters/removes interposer effects. Please contact Nexus for the appropriate de-embedding software for your interposer.

Attachment Service

Nexus Technology's expert attachment service provides a ready-to-go test solution customized to your application. We will attach the interposer and any additional accessories to your application's target. We can also power-on and test your application to confirm functionality. Please contact us for more information.



Figure 1 Direct Attach interposer installed under a memory component

Mechanical Outline

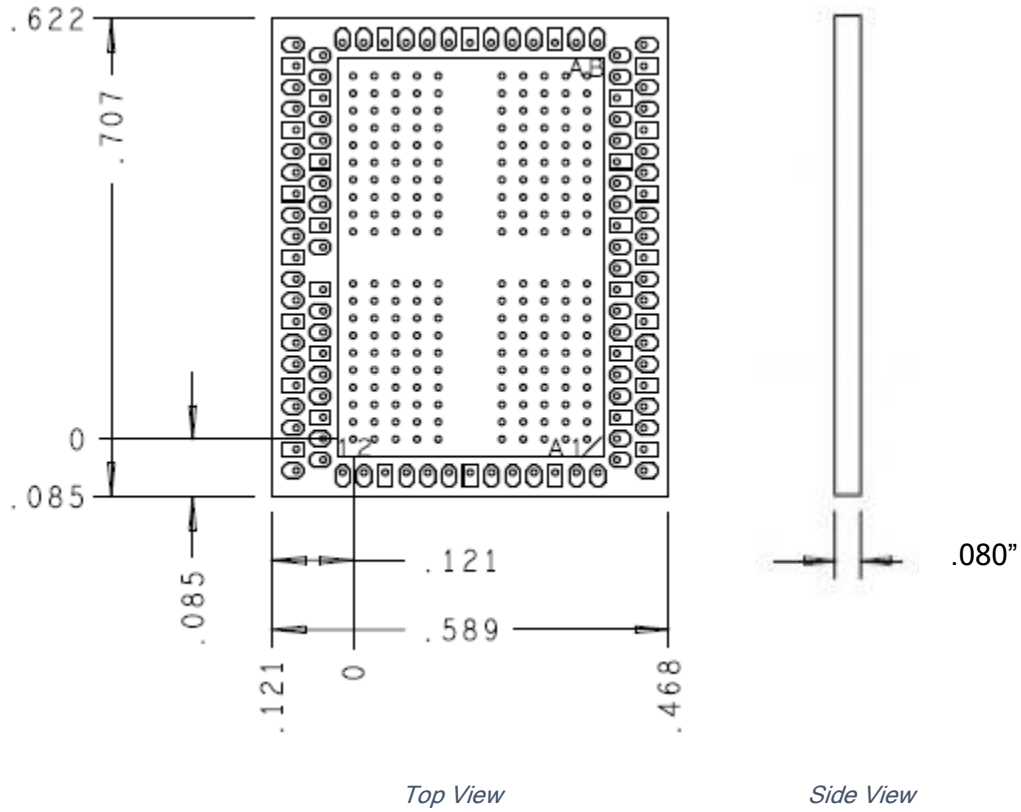


Figure 2 LPDDR4 200 Ball XH Series Direct Attach Interposer Mechanical Dimensions

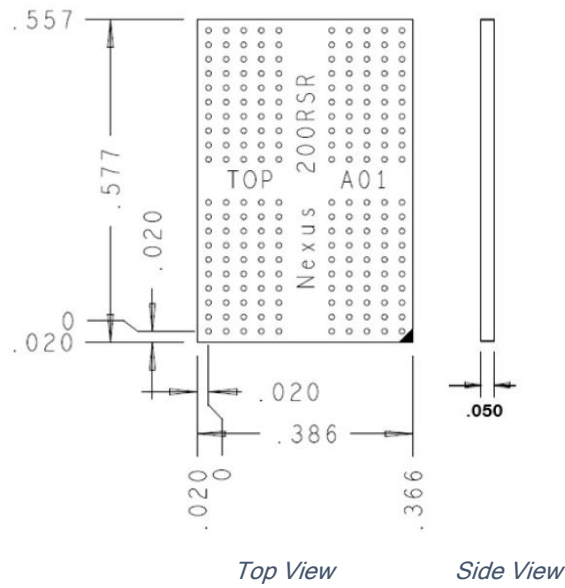
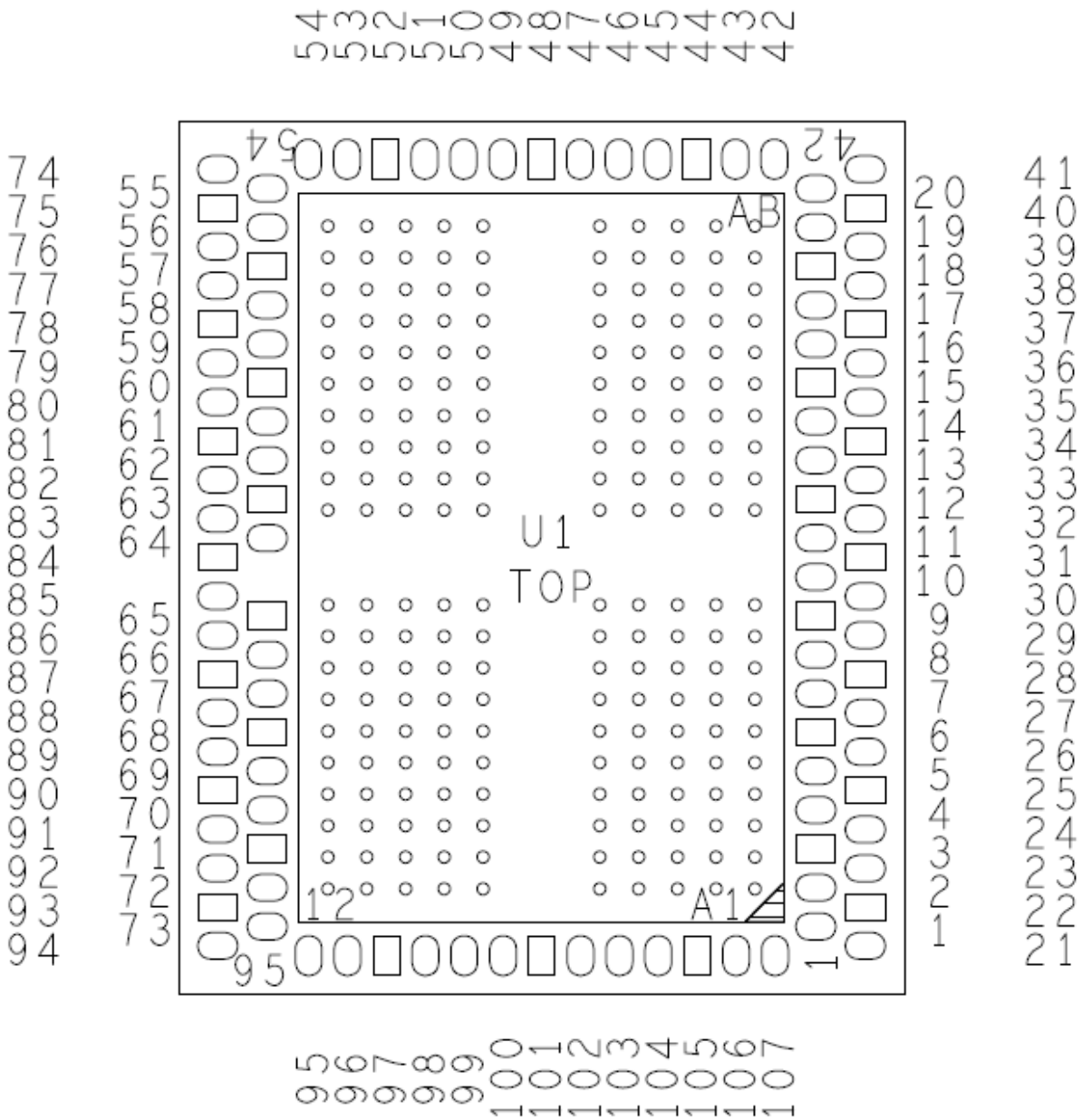


Figure 3 LPDDR4 200 Ball Riser Mechanical Dimensions

Probe Point Signal List

TEST Point	Signal	TEST Point	Signal	TEST Point	Signal
1	DQS0_t_a	37	GROUND	73	DQS1_t_a
2	DQS0_c_a	38	DQ3_b	74	DQ9_b
3	GROUND	39	DQ2_b	75	GROUND
4	DQ4_a	40	GROUND	76	DQ10_b
5	CS1_a	41	DQ1_b	77	DQ11_b
6	GROUND	42	DQ0_b	78	GROUND
7	CS0_a	43	DMI0_b	79	CA2_b
8	CKE0_a	44	GROUND	80	CA4_b
9	GROUND	45	DQ5_b	81	GROUND
10	CKE1_a	46	DQ7_b	82	CA3_b
11	CKE1_b	47	DQ6_b	83	CKE2_b
12	GROUND	48	GROUND	84	GROUND
13	CKE0_b	49	DQ14_b	85	CKE2_a
14	CS0_b	50	DQ15_b	86	CA5_a
15	GROUND	51	DQ13_b	87	GROUND
16	CS1_b	52	GROUND	88	CA2_a
17	DQ4_b	53	DMI1_b	89	CA4_a
18	GROUND	54	DQ8_b	90	GROUND
19	DQS0_c_b	55	DQS1_t_b	91	DQ11_a
20	DQS0_t_b	56	DQS1_c_b	92	DQ10_a
21	DQ1_a	57	GROUND	93	GROUND
22	GROUND	58	DQ12_b	94	DQ9_a
23	DQ2_a	59	RESET_n	95	DQ8_a
24	DQ3_a	60	GROUND	96	DMI1_a
25	GROUND	61	CK_t_b	97	GROUND
26	ODT_ca_a	62	CK_c_b	98	DQ13_a
27	CA0_a	63	GROUND	99	DQ15_a
28	GROUND	64	CA5_b	100	DQ14_a
29	CA1_a	65	GROUND	101	GROUND
30	CS2_a	66	CK_t_a	102	DQ6_a
31	GROUND	67	CK_c_a	103	DQ7_a
32	CS2_b	68	GROUND	104	DQ5_a
33	CA1_b	69	CA3_a	105	GROUND
34	GROUND	70	DQ12_a	106	DMI0_a
35	CA0_b	71	GROUND	107	DQ0_a
36	ODT_ca_b	72	DQS1_c_a		

Probe Point Locations



Product Configuration Table

Nomenclature	Solder Balls on Interposer
NEX-LP4MCI200XHSCDS	Yes

Available Accessories

Type	Desc.	Quantity	Nomenclature
Riser	LPDDR4 200-Ball Riser elevates interposer 0.050"	1	NEX-RSRLPDDR4200 ²
Socket	Memory socket	1	NEX-SOCKETLPDDR4200
Solder Balls	Install solder balls on socket	1	NEX-OPT-SOLDERBALLS-SK

² P/N NEX-RSRLPDDR4200 includes solderballs.

Attachment Service Options

Attachment Service Level	Description
Attachment Service	Contact us for more information

Contact Information

For more information, please contact us by telephone, email or mail as listed below. Normal business hours are 9:00 - 5:00 EDT/EST.

Web	www.nexustechnology.com
Telephone	877.595.8116
International	603.329.3083
Fax	877.595.8118
Address	78 Northeastern Blvd. Unit 2 Nashua, NH 03062
Email	support@nexustechnology.com