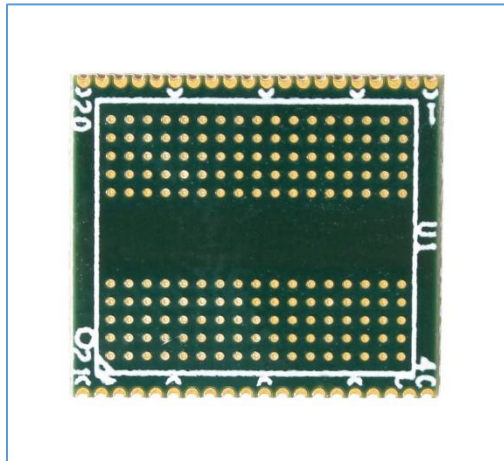


GDDR5 Interposers

GDDR5 170 Ball EdgeProbe Interposer



Key Features

- GDDR5
- 170-Ball
- X16/x32 Datawidth
- High fidelity
- Enables oscilloscope probing

Applications

- GDDR5
 - Memory validation and debug
 - Monitoring bus traffic
 - Bus traffic measurement
 - Analog insight

Simulation and De-Embedding

S-Parameters are included for target simulation and the creation of de-embedding filters for use with an oscilloscope.

Attachment Service

Nexus Technology's expert attachment service provides a ready-to-go test solution customized to your application. We will attach the interposer and any additional accessories to your application's target. We can also power-on and test your application to confirm functionality. Please contact us for more information.

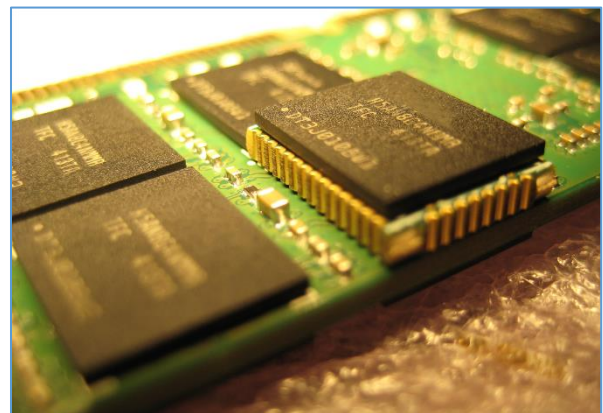


Figure 1 EdgeProbe interposer installed under a memory component

Mechanical Outline

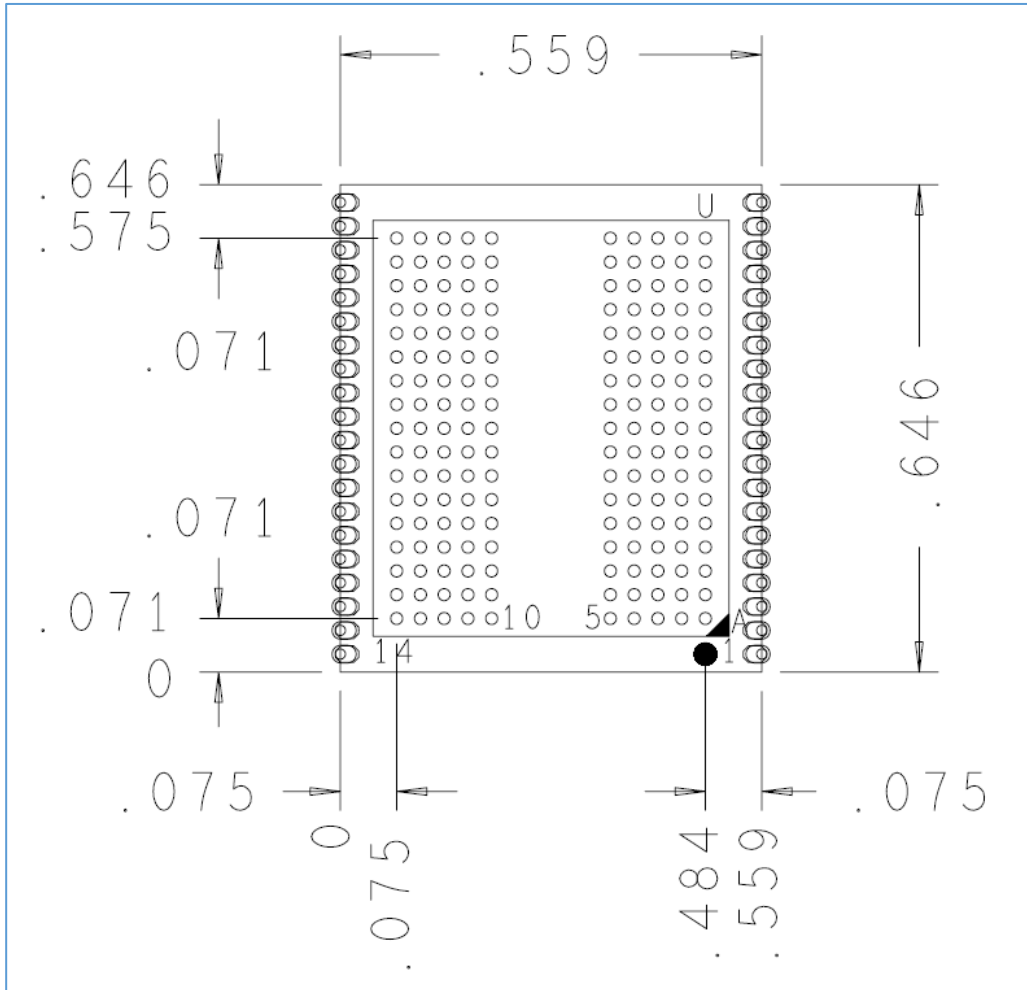


Figure 2 GDDR5 170 Ball EdgeProbe Interposer Mechanical Dimensions

Probe Point Signal List

Table 1 - GDDR5 170 Ball EdgeProbe Interposer Signals Probed Channel 1-2

TEST Point	Signal	TEST Point	Signal	TEST Point	Signal
1	GROUND	18	DQ2_1	35	CLE_1
2	NC/DQ3_2	19	DQ1_1	36	GROUND
3	NC/DQS_2	20	DQ0_1	37	CE0_2
4	NC/DQS_2c	21	GROUND	38	NU/WE_2
5	NC/RE_2n	22	DQ4_1	39	NU/DQ7_2
6	GROUND	23	DQ5_1	40	RB0_2
7	NC/RE_2c	24	DQ6_1	41	GROUND
8	NC/WP_2	25	GROUND	42	GROUND
9	NC/CLE_2	26	GROUND	43	NC/DQ2_2
10	NC/ALE_2	27	DQ3_1	44	NC/DQ1_2
11	GROUND	28	DQS_1	45	NC/DQ0_2
12	CE0_1	29	DQS_1c	46	GROUND
13	WE_1	30	WP_1	47	NU/DQ4_2
14	RB0_1	31	GROUND	48	NU/DQ5_2
15	DQ7_1	32	RE_1n	49	NU/DQ6_2
16	GROUND	33	ALE_1	50	GROUND
17	GROUND	34	RE_1c		

Table 2 - GDDR5 170 Ball EdgeProbe Interposer Signals Probed

Probe Point Locations

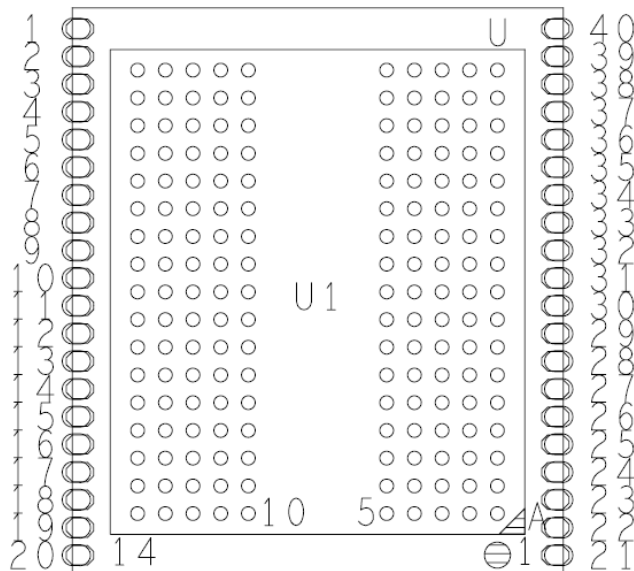


Figure 3 GDDR5 170 Ball Edge Probe Probe Point Locations

Product Configuration Table

Nomenclature	Solder Balls on Interposer
NEX-GDDR5MC1170SCDSD	No

Available Accessories

Type	Desc.	Quantity	Nomenclature
Option to add Solder Balls	Add solder balls to EdgeProbe Interposer	1	NEX-OPT-SOLDERBALLS-EP
Memory Socket	Memory Socket	1	NEX-SOCKETGDDR5170

Attachment Service Options

Attachment Service Level	Description
Attachment Service	Contact us for more information

Contact Information

For more information, please contact us by telephone, email or mail as listed below. Normal business hours are 9:00 - 5:00 EDT/EST.

Web	www.nexustechnology.com
Telephone	877.595.8116
International	603.329.3083
Fax	877.595.8118
Address	78 Northeastern Blvd. Unit 2 Nashua, NH 03062
Email	support@nexustechnology.com