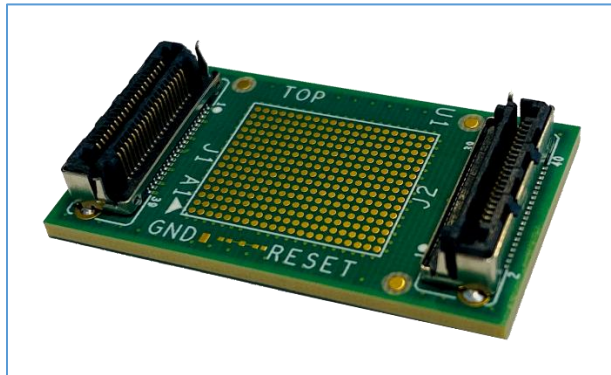


LPDDR5 Interposers

LPDDR5 315 Ball Direct Attach Compliance Interposer



Key Features

- LPDDR5
- 315-Ball
- 2 Channel x16 Memory Component
- High Fidelity
- Enables Probing with Nexus MA5100
- Optimized for JEDEC Compliance

Applications

- LPDDR5
 - Memory validation and debug
 - Monitoring bus traffic
 - Bus traffic measurement
 - JEDEC compliance

MA5100 Real Time JEDEC Protocol Compliance Analysis

- Real time JEDEC compliance analysis of the LPDDR5 bus using the 315 ball interposer (See MA5100 Datasheet for more information)
- MA5100 includes an integrated logic analyzer for use in addition to the real time JEDEC compliance validation
- Programmable MA input enables accurate sample point setting and probe termination to ground or VTT.
- Supports the fastest LPDDR5 speeds specified in JEDEC
- Optimize your design using MA features

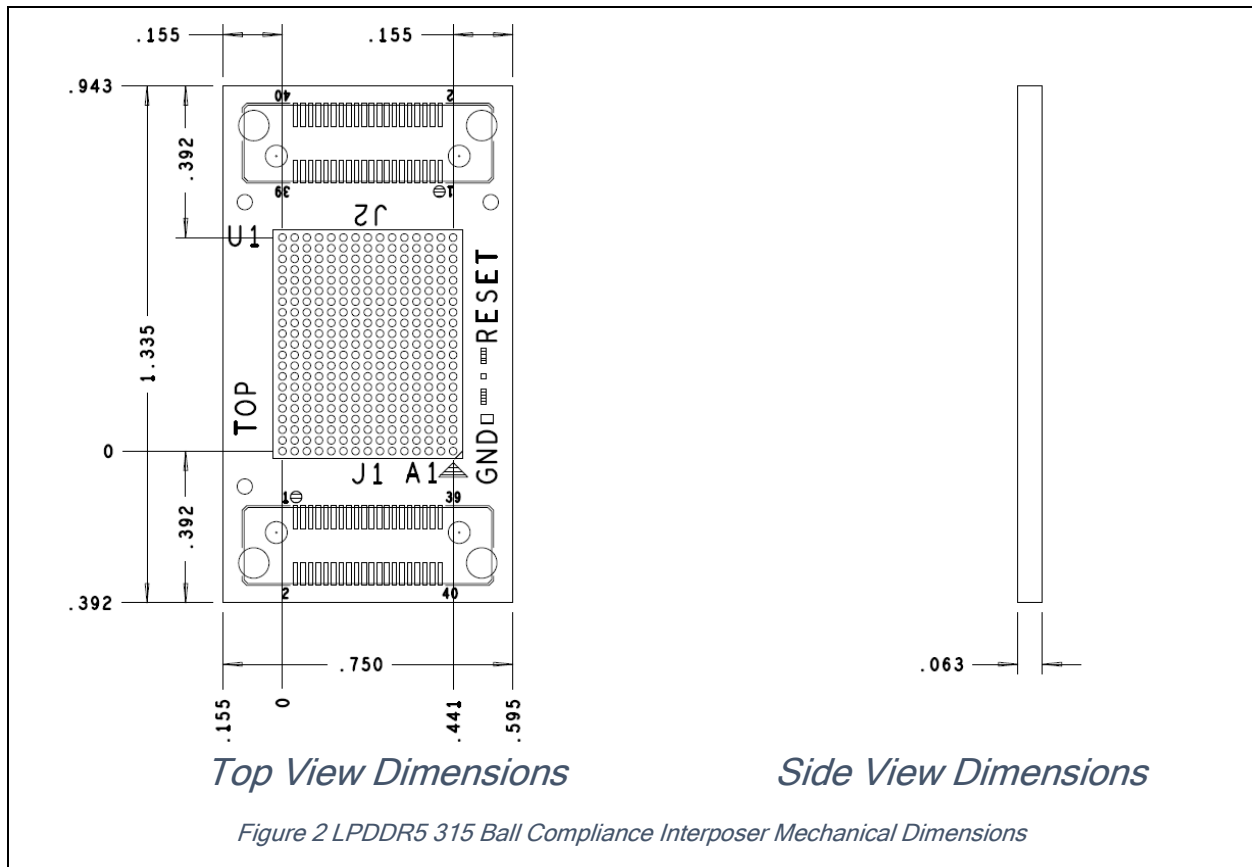
Attachment Service

Nexus Technology's expert attachment service provides a ready-to-go test solution customized to your application. We will attach the interposer and any additional accessories to your application's target. We can also power-on and test your application to confirm functionality. Please contact us for more information.

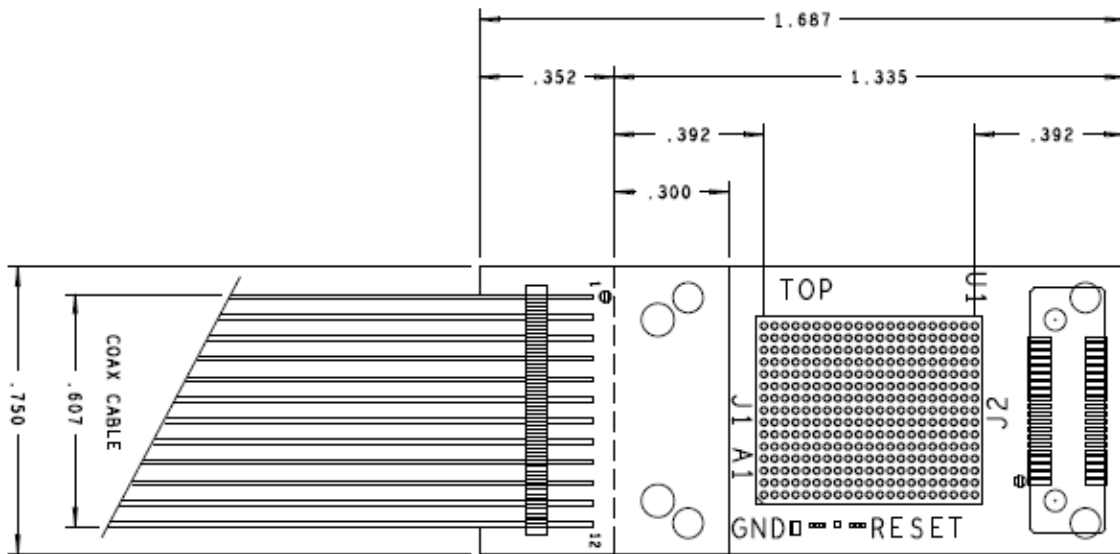


Figure 1 MA 5100 interposer installed under a memory component

Mechanical Outline

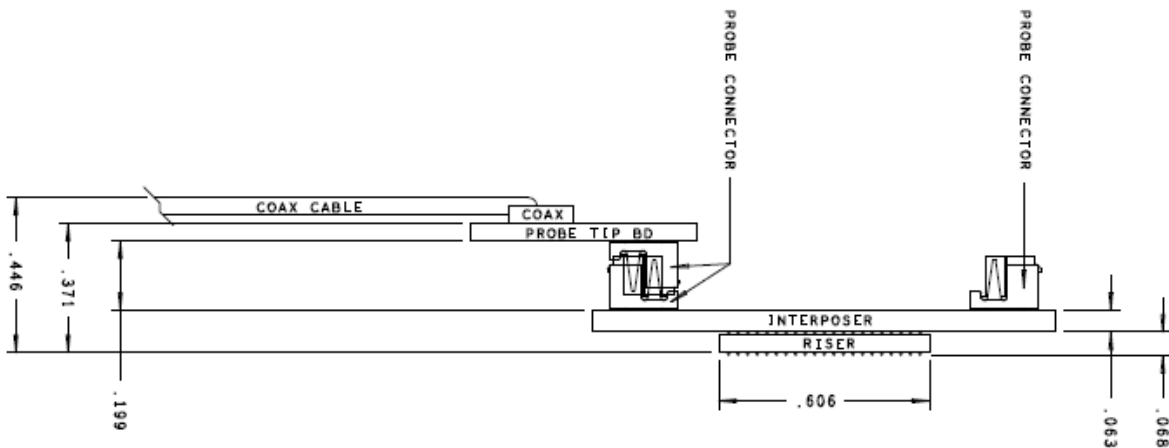


Note: All measurements listed are in inches



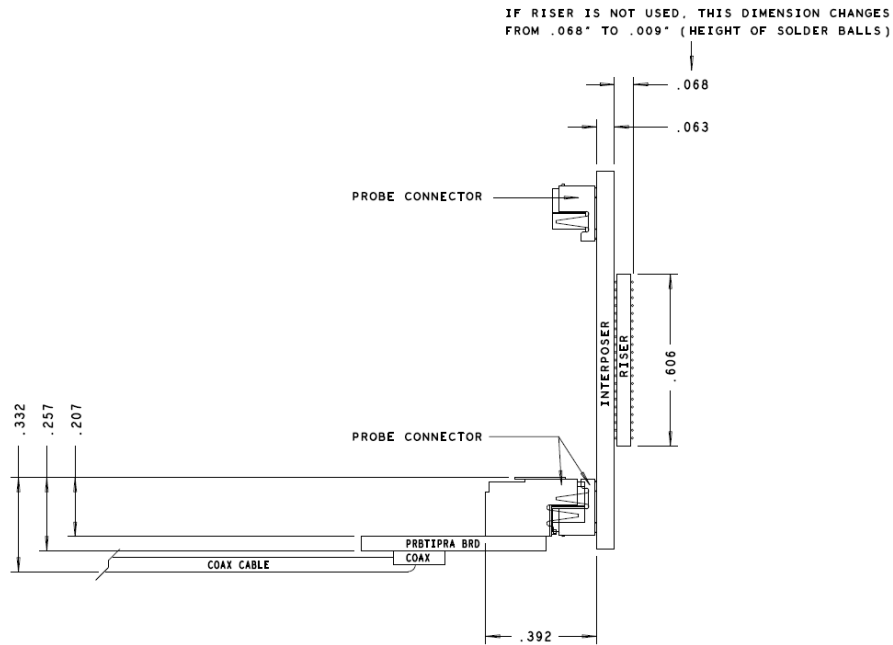
Top View Dimensions

Figure 3 LPDDR5 315 Ball Compliance Interposer Mechanical Dimensions with J1 probed using NEX-PRB-MAPSV1. (Right angle/vertical probe version also available if needed.)



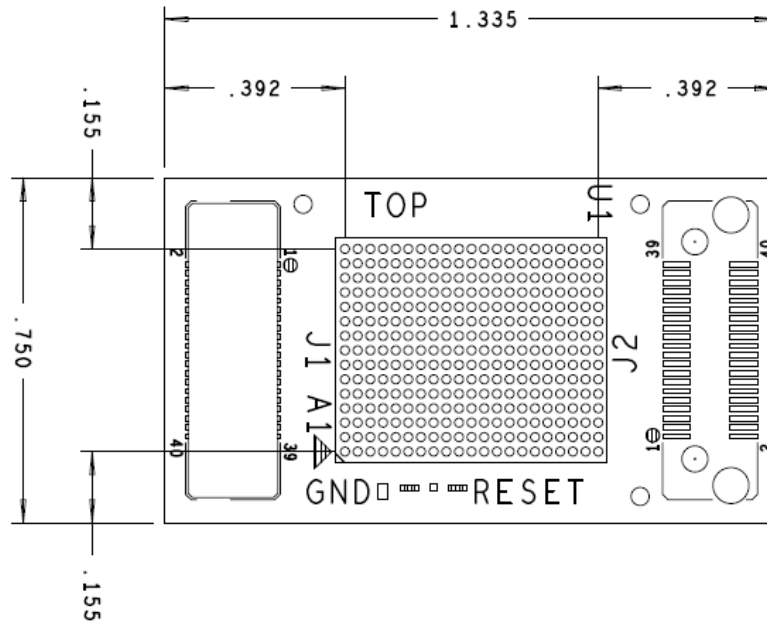
Side View Dimensions

Figure 4 LPDDR5 315 Ball Compliance Interposer Mechanical Dimensions with J1 probed using NEX-PRB-MAPSV1. (Right angle/vertical probe version also available if needed.)



Side View Dimensions

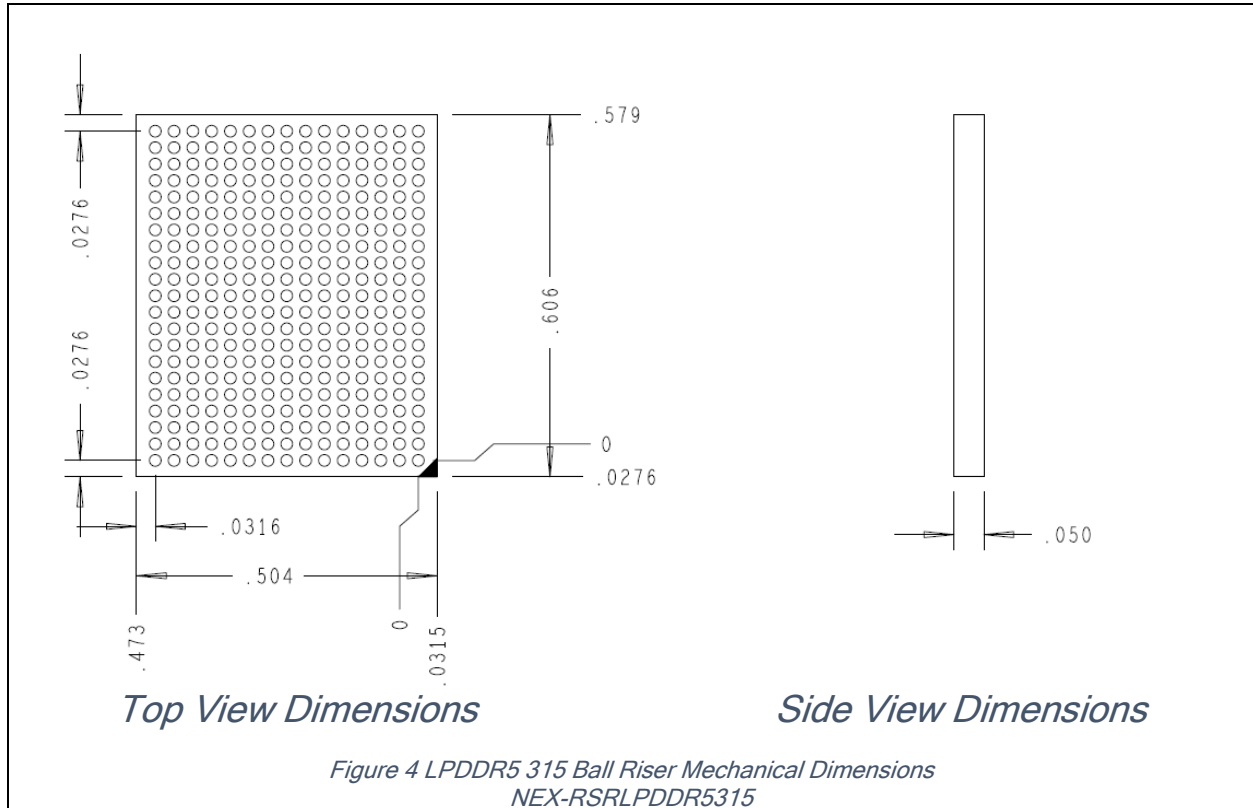
Figure 4 LPDDR5 315 Ball Compliance Interposer Mechanical Dimensions with J1 probed using NEX-PRB-MAPSV1-RAV.



Top View Dimensions

Figure 5 LPDDR5 315 Ball Compliance Interposer Mechanical Dimensions with J1 probed using NEX-PRB-MAPSV1-RAV.

Note: All measurements listed are in inches



Note: All measurements listed are in inches

Product Configuration Table

Nomenclature	Interposer Type	Riser Included	Component Socket Included
NEX-LP5MCI315CA	Logic/Compliance	Yes ¹	No

¹ Riser elevates interposer 0.050". Riser also includes solderballs.

Available Accessories

Type	Desc.	Quantity	Nomenclature
Riser	LPDDR5 315-Ball Riser elevates interposer 0.050"	1	NEX-RSRLPDDR5315 ²

² P/N NEX-RSRLPDDR5315 includes solderballs.

Attachment Service Options

Attachment Service Level	Description
Attachment Service	Contact us for more information

Contact Information

For more information, please contact us by telephone, email or mail as listed below. Normal business hours are 9:00 - 5:00 EDT/EST.

Web	www.nexustechnology.com
Telephone	877.595.8116
International	603.329.3083
Fax	877.595.8118
Address	78 Northeastern Blvd. Unit 2 Nashua, NH 03062
Email	support@nexustechnology.com