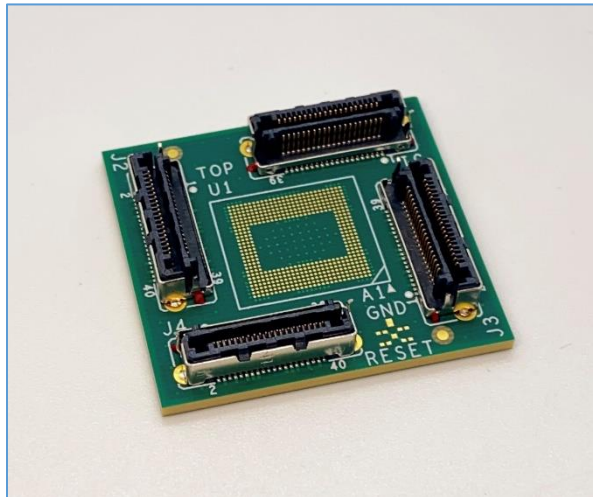


# LPDDR5 Interposers

LPDDR5 496 Ball Direct Attach Compliance Interposer



## Key Features

- LPDDR5
- 496-Ball
- 4 Channel x16 Memory Component
- High Fidelity
- Enables Probing with Nexus MA5100
- Optimized for JEDEC Compliance

## Applications

- LPDDR5
  - Memory validation and debug
  - Monitoring bus traffic
  - Bus traffic measurement
  - JEDEC compliance

## MA5100 Real Time JEDEC Protocol Compliance Analysis

- Real time JEDEC compliance analysis of the LPDDR5 bus using the 496 ball interposer (See MA5100 Datasheet for more information)
- MA5100 includes an integrated logic analyzer for use in addition to the real time JEDEC compliance validation
- Programmable MA input enables accurate sample point setting and probe termination to ground or VTT.
- Supports the fastest LPDDR5 speeds specified in JEDEC
- Optimize your design using MA features

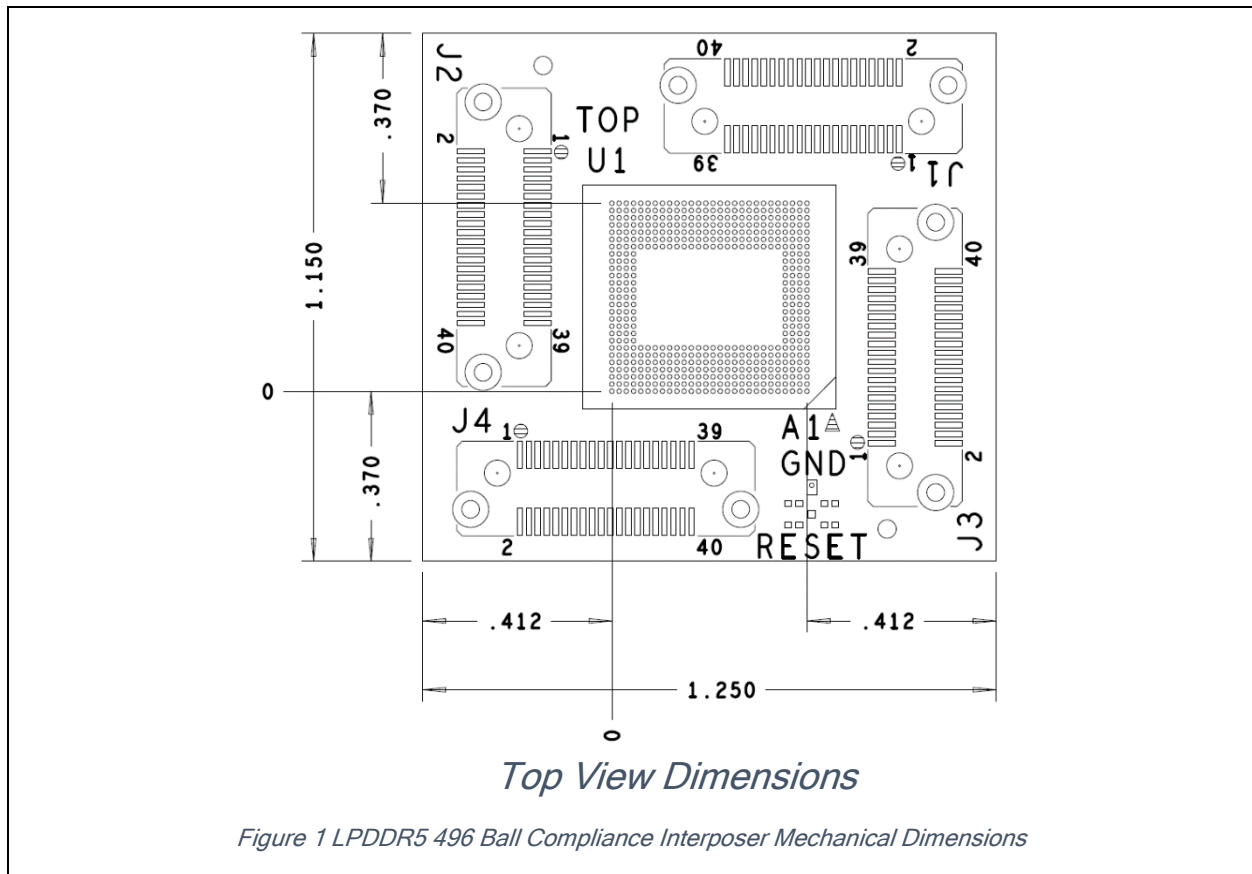
## Attachment Service

Nexus Technology's expert attachment service provides a ready-to-go test solution customized to your application. We will attach the interposer and any additional accessories to your application's target. We can also power-on and test your application to confirm functionality. Please contact us for more information.

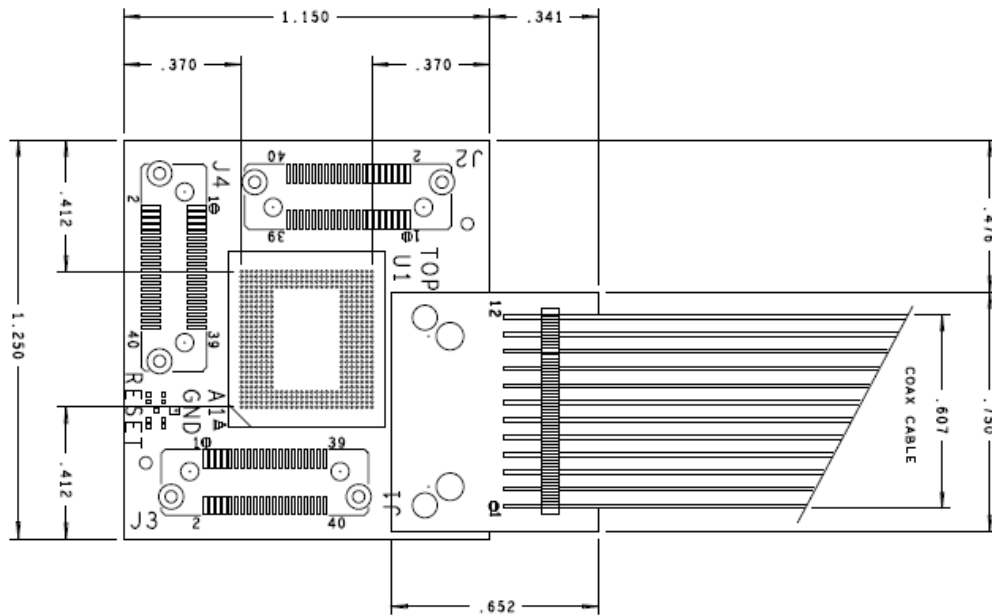


Figure 1 MA 5100 interposer installed under a memory component

## Mechanical Outline

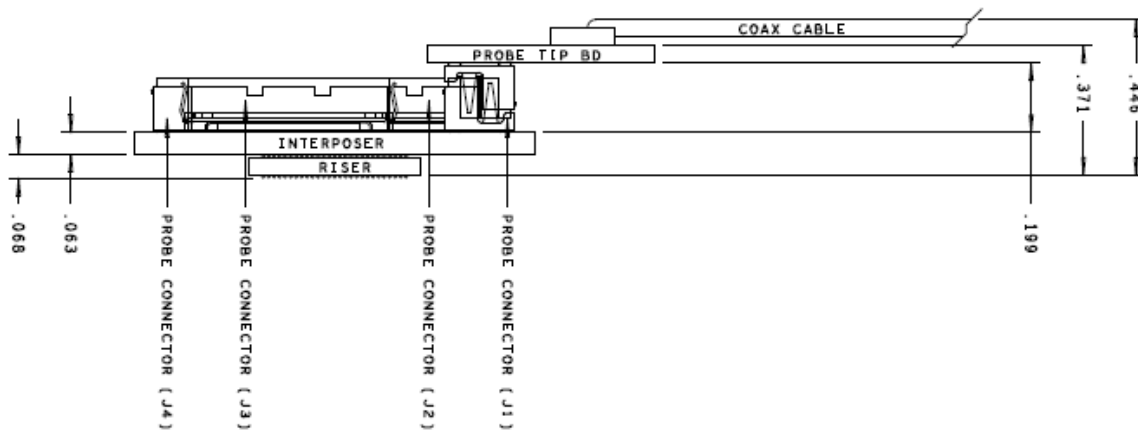


Note: All measurements listed are in inches



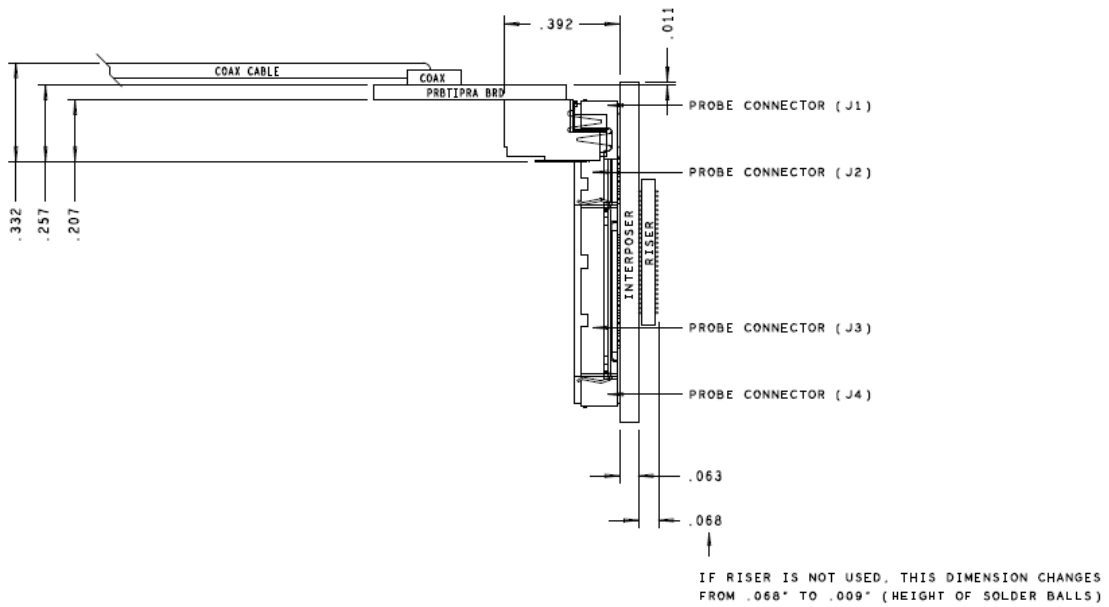
*Top View Dimensions*

Figure 2 LPDDR5 496 Ball Compliance Interposer Mechanical Dimensions with J1 probed using NEX-PRB-MAPSV1. (Right angle/vertical probe version also available if needed.)



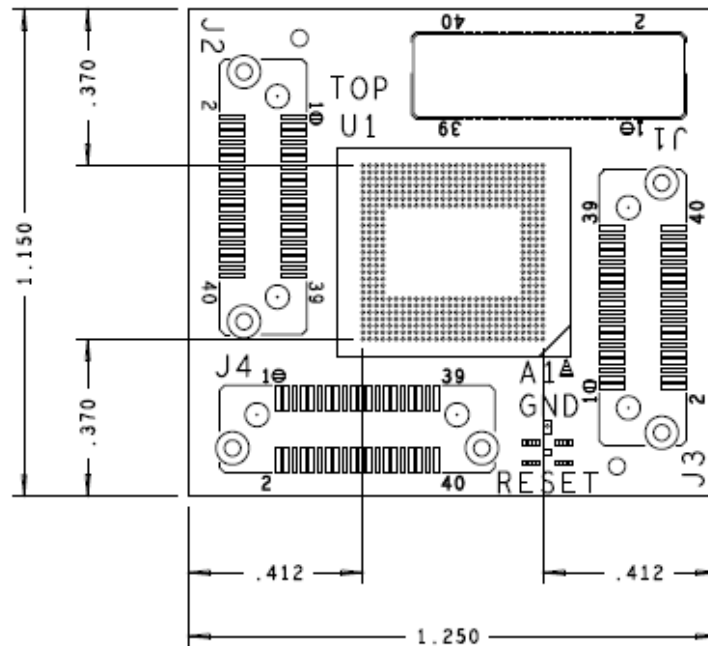
*Side View Dimensions*

Figure 3 LPDDR5 496 Ball Compliance Interposer Mechanical Dimensions with J1 probed using NEX-PRB-MAPSV1. (Right angle/vertical probe version also available if needed.)



### Side View Dimensions

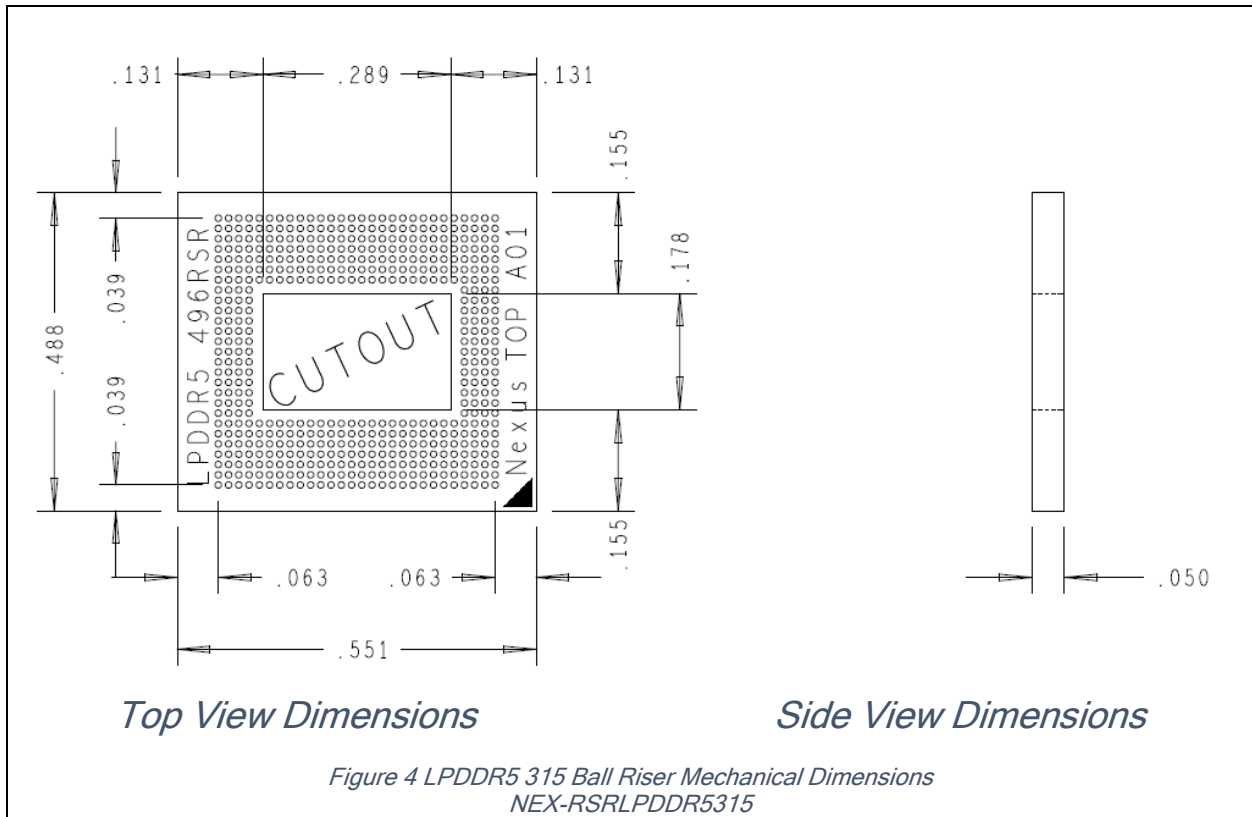
Figure 4 LPDDR5 496 Ball Compliance Interposer Mechanical Dimensions with J1 probed using NEX-PRB-MAPSV1-RAV.



### Top View Dimensions

Figure 5 LPDDR5 496 Ball Compliance Interposer Mechanical Dimensions with J1 probed using NEX-PRB-MAPSV1-RAV.

Note: All measurements listed are in inches



Note: All measurements listed are in inches

## Product Configuration Table

Nomenclature	Interposer Type	Riser Included	Component Socket Included
NEX-LP5MCI496CA	Logic/Compliance	Yes <sup>1</sup>	No

<sup>1</sup> Riser elevates interposer 0.050". Riser also includes solderballs.

## Available Accessories

Type	Desc.	Quantity	Nomenclature
Riser	LPDDR5 496-Ball Riser elevates interposer 0.050"	1	NEX-RSRLPDDR5496 <sup>2</sup>

<sup>2</sup> P/N NEX-RSRLPDDR5496 includes solderballs.

## Attachment Service Options

Attachment Service Level	Description
Attachment Service	Contact us for more information

## Contact Information

For more information, please contact us by telephone, email or mail as listed below. Normal business hours are 9:00 - 5:00 EDT/EST.

Web	www.nexustechnology.com
Telephone	877.595.8116
International	603.329.3083
Fax	877.595.8118
Address	78 Northeastern Blvd. Unit 2 Nashua, NH 03062
Email	support@nexustechnology.com