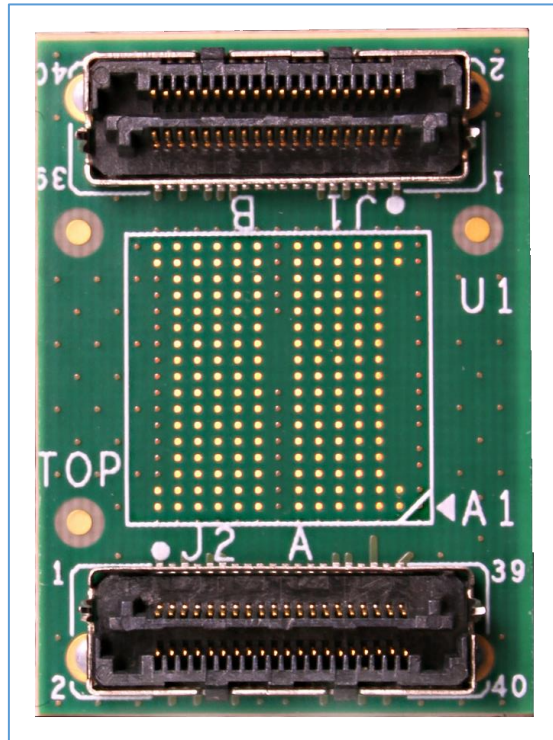


LPDDR3 Interposers

LPDDR3 178 Ball Direct Attach Compliance Interposer



Key Features

- LPDDR3
- 178-Ball
- x32 Memory Component
- High Fidelity
- Enables Probing with Nexus MA5100
- Optimized for JEDEC Compliance
- .3mm Solder Ball Size Devices
 - Other Solder Ball Sizes Available Upon Request

Applications

- LPDDR3
 - Memory validation and debug
 - Monitoring bus traffic
 - Bus traffic measurement
 - JEDEC compliance

MA5100 Real Time JEDEC Protocol Compliance Analysis

- Real time JEDEC compliance analysis of the LPDDR3 bus using the 178 ball interposer (See MA5100 Datasheet for more information)
- MA5100 includes an integrated logic analyzer for use in addition to the real time JEDEC compliance validation
- Programmable MA input enables accurate sample point setting and probe termination to ground or VTT.
- Supports the fastest LPDDR3 speeds specified in JEDEC
- Optimize your design using MA features

Attachment Service

Nexus Technology's expert attachment service provides a ready-to-go test solution customized to your application. We will attach the interposer and any additional accessories to your application's target. We can also power-on and test your application to confirm functionality. Please contact us for more information.

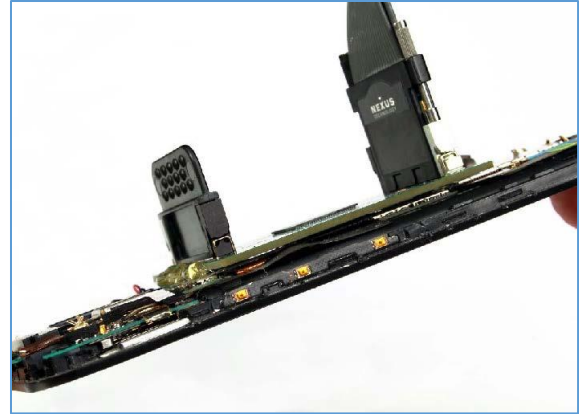


Figure 1 Compliance interposer installed under a memory component

Mechanical Outline

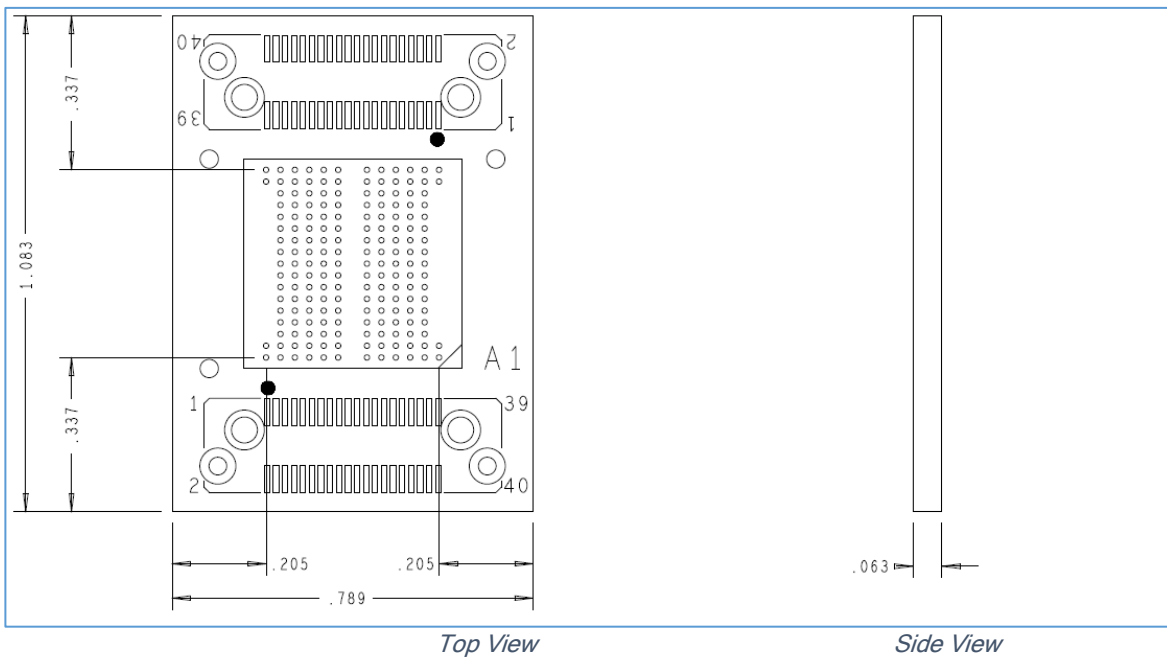


Figure 2 LPDDR3 178 Ball Direct Attach Compliance Interposer Mechanical Dimensions

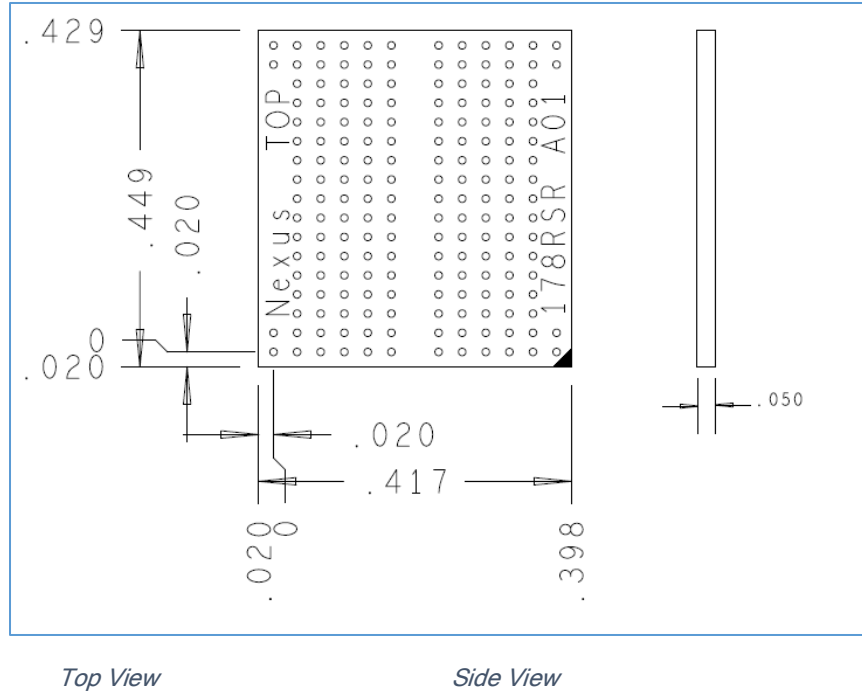


Figure 3 LPDDR3 178 Ball Riser Mechanical Dimensions

Product Configuration Table

Nomenclature	Interposer Type	Riser Included	Component Socket Included
NEX-LP3MCI178CA	Logic/Compliance	Yes	No
NEX-LP3MCI178CA-SK	Logic/Compliance	Yes	Yes

Available Accessories

Type	Desc.	Quantity	Nomenclature
Riser	Riser with Solder balls added elevates interposer 0.50"	1	NEX-RSRLPDDR3178

Attachment Service Options

Attachment Service Level	Description
Attachment Service	Contact us for more information

Contact Information

For more information, please contact us by telephone, email or mail as listed below. Normal business hours are 9:00 - 5:00 EDT/EST.

Web	www.nexustechology.com
Telephone	877.595.8116
International	603.329.3083
Fax	877.595.8118
Address	78 Northeastern Blvd. Unit 2 Nashua, NH 03062
Email	support@nexustechology.com