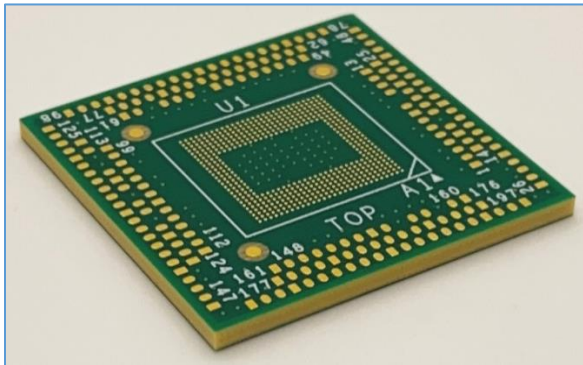


LPDDR5 Interposers

LPDDR5 496 Ball XH Series Direct Attach Interposer



Key Features

- LPDDR5
- XH Series Universal Probe Interposer
- 496-ball
- 4 Channel x16 Memory Component
- High fidelity
- Enables oscilloscope probing

Applications

- LPDDR5
 - Memory validation and debug
 - Monitoring bus traffic
 - Bus traffic measurement
 - Analog insight

Simulation and De-Embedding

S-Parameters are included for target simulation and the creation of de-embedding filters for use with an oscilloscope.

Attachment Service

Nexus Technology's expert attachment service provides a ready-to-go test solution customized to your application. We will attach the interposer and any additional accessories to your application's target. We can also power-on and test your application to confirm functionality. Please contact us for more information.



Mechanical Outline

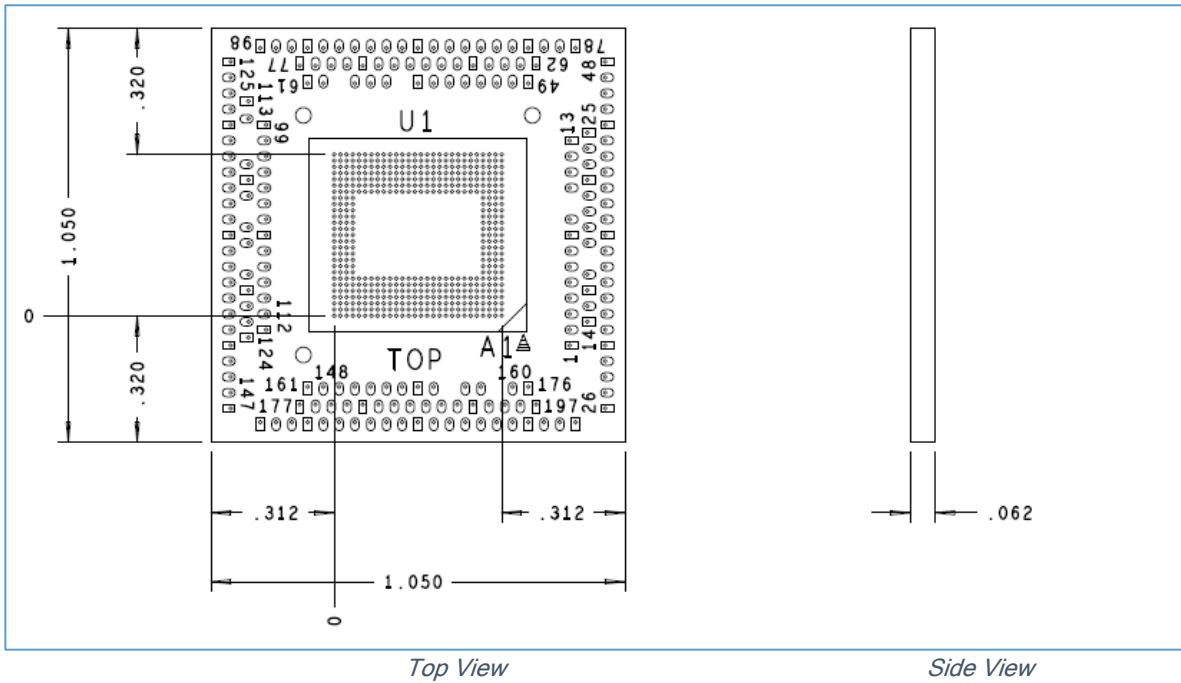
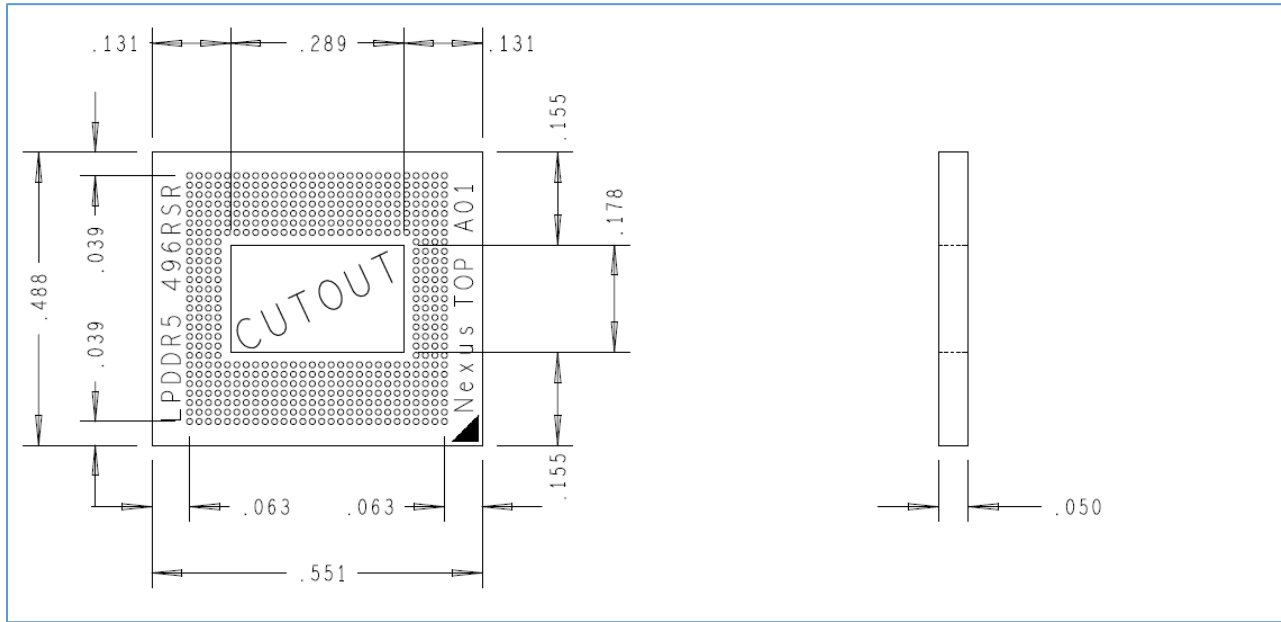


Figure 1 LPDDR5 496 Ball XH Series Direct Attach Interposer Mechanical Dimensions

LPDDR5 496 Ball XH Series Direct Attach Interposer



Top View

Side View

Figure 2 LPDDR5 496 Ball Riser Mechanical Dimensions

Probe Point Signal List

TEST Point	Signal	TEST Point	Signal	TEST Point	Signal	TEST Point	Signal	TEST Point	Signal
1	GROUND	41	DQ15_B	81	GROUND	121	GROUND	161	GROUND
2	WCK0_c_A	42	WCK1_t_B	82	CS0_B	122	CA5_C	162	DQ10_C
3	WCK0_t_A	43	WCK1_c_B	83	DQ6_B	123	DQ8_C	163	DMI1_C
4	CA2_A	44	GROUND	84	DQ5_B	124	GROUND	164	CA4_C
5	CA3_A	45	DQ9_B	85	RDQS0_c_B	125	GROUND	165	GROUND
6	WCK1_c_A	46	RDQS1_t_B	86	RDQS0_t_B	126	DQ3_D	166	DMI0_C
7	WCK1_t_A	47	RDQS1_c_B	87	DQ0_B	127	DQ2_D	167	DQ9_A
8	GROUND	48	GROUND	88	GROUND	128	DQ4_D	168	RDQS1_t_A
9	DQ2_B	49	GROUND	89	DQ1_B	129	GROUND	169	RDQS1_c_A
10	CK_t_B	50	DQ11_B	90	DQ11_D	130	CK_t_D	170	DQ14_A
11	CK_c_B	51	CA6_B	91	DMI1_D	131	CK_c_D	171	CS0_A
12	DQ12_B	52	CS1_B	92	CA6_D	132	CA5_D	172	GROUND
13	GROUND	53	CA0_B	93	CA4_D	133	DQ12_D	173	RDQS0_c_A
14	GROUND	54	DQ3_B	94	CS1_D	134	DQ10_D	174	RDQS0_t_A
15	DQ7_A	55	DQ8_D	95	GROUND	135	RESET_n	175	DQ0_A
16	GROUND	56	GROUND	96	CA0_D	136	GROUND	176	GROUND
17	DQ15_A	57	DQ14_D	97	DMI0_D	137	DQ7_C	177	GROUND
18	WCK0_t_B	58	DQ6_D	98	GROUND	138	CA2_C	178	DQ13_C
19	WCK0_c_B	59	DQ5_D	99	GROUND	139	CA3_C	179	DQ14_C
20	DQ4_B	60	DQ1_D	100	WCK0_c_D	140	DQ15_C	180	GROUND
21	CA1_B	61	GROUND	101	WCK0_t_D	141	WCK1_t_C	181	CS0_C
22	GROUND	62	GROUND	102	CA2_D	142	WCK1_c_C	182	DQ6_C
23	CA5_B	63	DQ10_B	103	CA3_D	143	GROUND	183	DQ5_C
24	DQ8_B	64	DMI1_B	104	WCK1_c_D	144	DQ9_C	184	RDQS0_c_C
25	GROUND	65	CA4_B	105	WCK1_t_D	145	RDQS1_t_C	185	RDQS0_t_C
26	GROUND	66	GROUND	106	GROUND	146	RDQS1_c_C	186	DQ0_C
27	DQ3_A	67	DMI0_B	107	DQ2_C	147	GROUND	187	GROUND
28	DQ2_A	68	DQ9_D	108	DQ4_C	148	GROUND	188	DQ1_C
29	DQ4_A	69	RDQS1_t_D	109	CK_t_C	149	DQ11_C	189	DQ11_A
30	GROUND	70	RDQS1_c_D	110	CK_c_C	150	CA6_C	190	DMI1_A
31	CA1_A	71	DQ13_D	111	DQ12_C	151	CS1_C	191	CA6_A
32	CK_t_A	72	CS0_D	112	GROUND	152	CA0_C	192	CA4_A
33	CK_c_A	73	GROUND	113	GROUND	153	DQ3_C	193	CS1_A
34	CA5_A	74	RDQS0_c_D	114	CA1_D	154	DQ8_A	194	GROUND
35	DQ12_A	75	RDQS0_t_D	115	DQ7_D	155	GROUND	195	CA0_A
36	DQ10_A	76	DQ0_D	116	GROUND	156	DQ13_A	196	DMI0_A
37	GROUND	77	GROUND	117	DQ15_D	157	DQ6_A	197	GROUND
38	DQ7_B	78	GROUND	118	WCK0_t_C	158	DQ5_A		
39	CA2_B	79	DQ13_B	119	WCK0_c_C	159	DQ1_A		
40	CA3_B	80	DQ14_B	120	CA1_C	160	GROUND		

Probe Point Locations

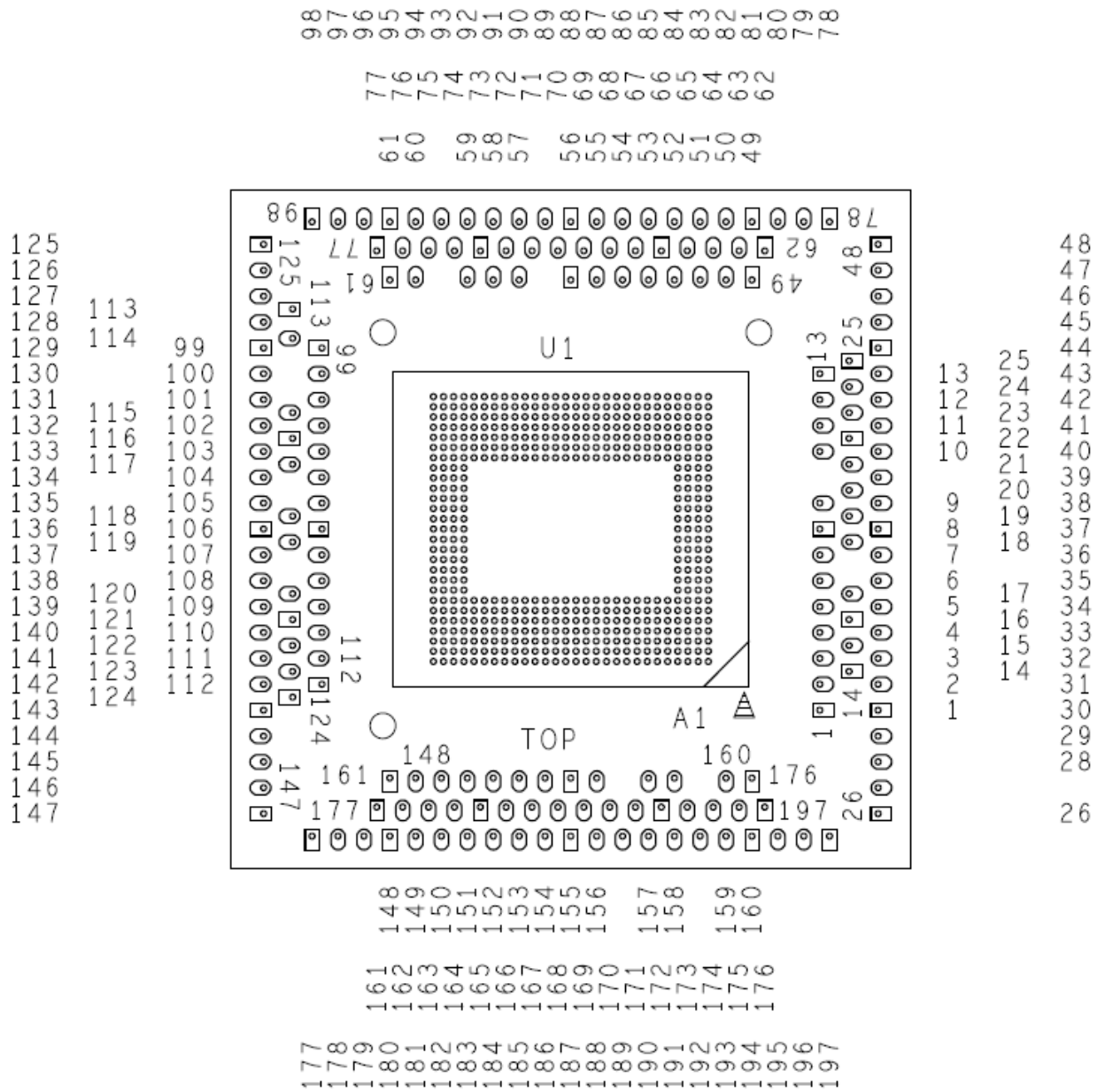


Figure 3 LPDDR5 496 Ball XH Series Direct Attach Interposer Probe Point Locations

Product Configuration Table

Nomenclature	Solder Balls on Interposer	Riser Included
NEX-LP5MCI496XHSCDS	Yes	No

Available Accessories

Type	Desc.	Quantity	Nomenclature
Riser	LPDDR5 496-Ball Riser elevates interposer 0.050"	1	NEX-RSRLPDDR5496 ¹

¹ P/N NEX-RSRLPDDR5496 includes solderballs.

Attachment Service Options

Attachment Service Level	Description
Attachment Service	Contact us for more information

Contact Information

For more information, please contact us by telephone, email or mail as listed below. Normal business hours are 9:00 - 5:00 EDT/EST.

Web	www.nexustechnology.com
Telephone	877.595.8116
International	603.329.3083
Fax	877.595.8118
Address	78 Northeastern Blvd. Unit 2 Nashua, NH 03062
Email	support@nexustechnology.com