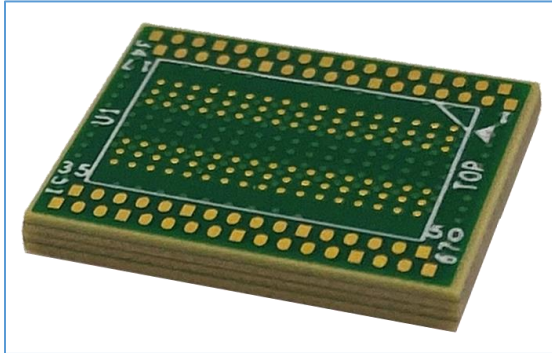


# DDR5 Interposers

DDR5 x16 XH Series Direct Attach Interposers



## Key Features

- DDR5
- XH Series Universal Probe Interposer
- x16
- High Fidelity
- Enables Oscilloscope Probing

\* For DDR5 x16 106 Ball Support, Please [Contact Nexus](#)

## Applications

- DDR5
  - Memory validation and debug
  - Monitoring bus traffic
  - Bus traffic measurement
  - Analog insight

## Simulation & De-Embedding

S-Parameters are included for target simulation and the creation of de-embedding filters for use with an oscilloscope.

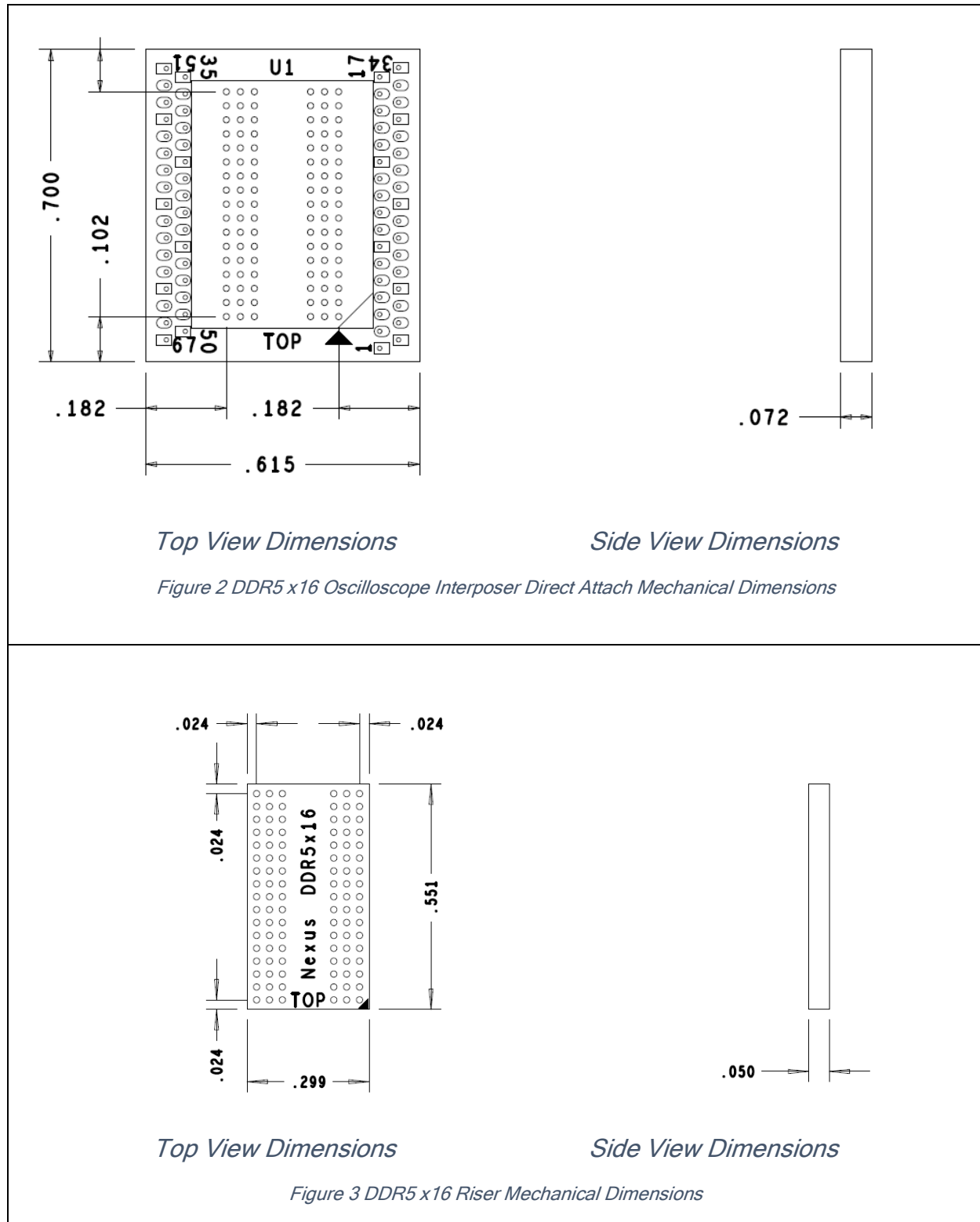
## Attachment Service

Nexus Technology's expert attachment service provides a ready-to-go test solution customized to your application. We will attach the interposer and any additional accessories to your application's target. We can also power-on and test your target to confirm functionality. Please contact us for more information.



Figure 1 - Direct Attach interposer installed under a memory component

## Mechanical Outline



Note: All measurements listed are in inches

## Probe Point Signal List

TEST Point	Signal	TEST Point	Signal	TEST Point	Signal	TEST Point	Signal
1	GROUND	18	GROUND	35	GROUND	52	CA11
2	DQU2(DQ10)	19	LBDQ	36	CA13	53	RESET_n
3	DQSU_t	20	DQU0(DQ8)	37	CA9	54	GROUND
4	DQSU_c	21	GROUND	38	CA3	55	CA7
5	DQU6(DQ14)	22	DQU4(DQ12)	39	CA1	56	CA5
6	DQL2(DQ2)	23	DQL0(DQ0)	40	GROUND	57	TEN
7	GROUND	24	DQL4(DQ4)	41	CK_c	58	DQL5(DQ5)
8	DQSL_t	25	MIR	42	CK_t	59	GROUND
9	DQSL_c	26	GROUND	43	DQL7(DQ7)	60	DQL1(DQ1)
10	DQL6(DQ6)	27	CA_ODT	44	RFU_H7	61	DQU5(DQ13)
11	CS_n	28	ALERT_n	45	GROUND	62	DQU1(DQ9)
12	GROUND	29	CA4	46	DML_n	63	LBDQS
13	CA0	30	CA6	47	DQL3(DQ3)	64	GROUND
14	CA2	31	GROUND	48	DQU7(DQ15)	65	RFU_D7
15	CA8	32	CAI	49	DMU_n	66	DQU3(DQ11)
16	CA12	33	CA10	50	GROUND	67	GROUND
17	GROUND	34	GROUND	51	GROUND		

## Probe Point Locations

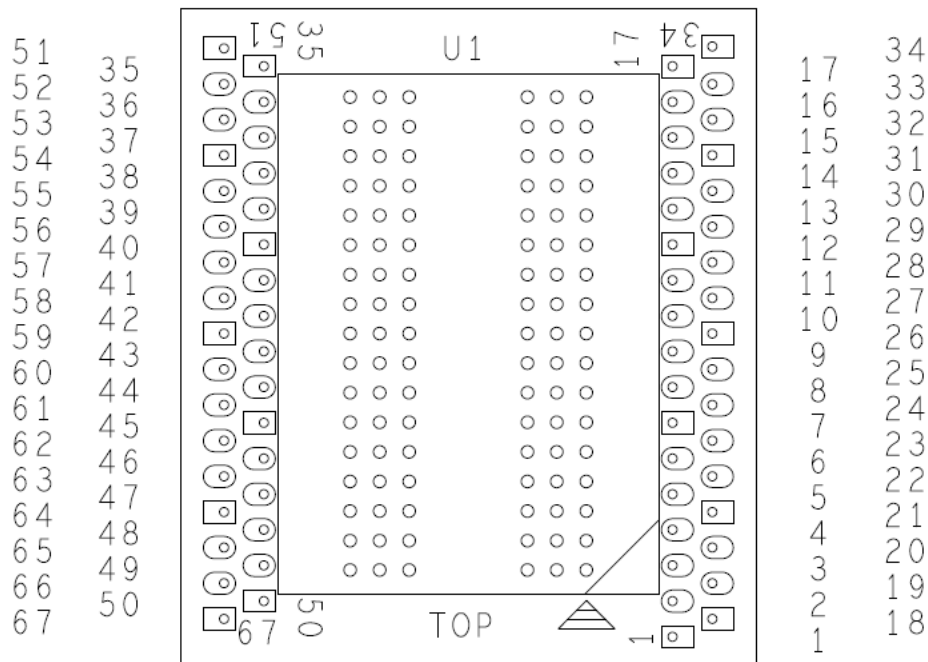


Figure 4 DDR5 x16 XH Series Direct Attach Interposer Probe Point Locations

## Product Configuration Table

Nomenclature	Solderballs added
NEX-DDR5MCIX16XHSCDS	Yes

## Available Accessories

	Desc.	Nomenclature
Riser	DDR5 x16 Riser elevates interposer 0.050"	NEX-RSRDDR5X16 <sup>1</sup>
Memory Socket	Memory component socket	NEX-SOCKETDDR5X16

<sup>1</sup> P/N NEX-RSRDDR5X16 includes solderballs.

## Attachment Service Options

Attachment Service Level	
Attachment Service	Contact us for more information

## Contact Information

For more information, please contact us by telephone, email or mail as listed below. Normal business hours are 9:00 - 5:00 EDT/EST.

Web	<a href="http://www.nexustechnology.com">www.nexustechnology.com</a>
Telephone	877.595.8116
International	603.329.3083
Fax	877.595.8118
Address	78 Northeastern Blvd. Unit 2 Nashua, NH 03062
Email	<a href="mailto:support@nexustechnology.com">support@nexustechnology.com</a>